

**Technical Report
On the
Opikeigen Gold Project
Thunder Bay Mining Division
Northwestern Ontario**

**Prepared for
Beatrix Ventures Inc.**
Suite 800-1199 West Hastings Street
Vancouver, B.C., V6E 3T5

Prepared by:
D. Cullen, P.Geo. and R.T. Chataway, P.Geo
Clark Exploration Consulting
1000 Alloy Drive
Thunder Bay, ON
P7B 6A5
December 3, 2009

ITEM 1

ITEM 2: TABLE OF CONTENTS

ITEM 3: SUMMARY.....	4
ITEM 4: INTRODUCTION.....	7
ITEM 5: RELIANCE ON OTHER EXPERTS	7
ITEM 6: PROPERTY DESCRIPTION AND LOCATION.....	8
ITEM 7: ACCESSIBILITY, CLIMATE, LOCAL RESOURCES, INFRASTRUCTURE AND PHYSIOGRAPHY.....	12
ITEM 8: PROPERTY HISTORY.....	13
ITEM 9: GEOLOGICAL SETTING – REGIONAL, LOCAL AND PROPERTY GEOLOGY	19
ITEM 10: DEPOSIT TYPES.....	25
ITEM 11: MINERALIZATION.....	28
ITEM 12: EXPLORATION	29
ITEM 13: DRILLING	29
ITEM 14: SAMPLING METHOD AND APPROACH.....	29
ITEM 15: SAMPLE PREPARATION, ANALYSIS AND SECURITY	30
ITEM 16: DATA VERIFICATION	30
ITEM 17: ADJACENT PROPERTIES.....	31
ITEM 18: MINERAL PROCESSING AND METALLURGICAL TESTING	31
ITEM 19: MINERAL RESOURCE AND MINERAL RESERVE ESTIMATES	31
ITEM 20: OTHER RELEVANT DATA AND INFORMATION.....	31
ITEM 21: INTERPRETATION AND CONCLUSIONS.....	32
ITEM 22: RECOMMENDATIONS.....	34
22.1 Proposed Budget.....	36
ITEM 23: REFERENCES.....	37
ITEM 24: DATE AND SIGNATURE PAGE.....	39
ITEM 25: CERTIFICATE OF QUALIFICATIONS	40

LIST OF TABLES

Table 1. Opikeigen Project Claims	9
Table 2: FHGM Grab Sample Co-ordinates and Values	16
Table 3. Table of Lithological Units	23

TABLE OF FIGURES

Figure 1. Location Map	10
Figure 2. Opikeigen Project Claims	11
Figure 3. Opikeigen Regional Geology	24
Figure 4. Opikeigen Project Geology and Occurrences	26
Figure 5. Opikeigen Historical Drilling	27

Appendix I – Assay Results from Opikeigen 2008 Drilling

ITEM 3: SUMMARY

Clark Exploration Consulting of Thunder Bay, Ontario was contracted by Beatrix Ventures Inc. (“Beatrix”) of Vancouver, British Columbia, to review historic data for the Opikeigen Project (the “Property”), identify its merits, propose an appropriate exploration program and budget for gold exploration on the property, and prepare a Technical Report (the “Report”) compliant with NI 43-101 and suitable for the purposes of a financing document for Beatrix.

The Opikeigen Property is located in northwestern Ontario centered roughly at 51°37’N and 88°03’W approximately 150 km east of Pickle Lake, and approximately 10 km northwest of the settlement of Fort Hope.

The Property is comprised of thirty-eight (38) unpatented mining claims, registered 100% to SLAM Exploration Ltd., totalling 259 claim units. The contiguous claim group is located in the Thunder Bay Mining District, Ontario on NTS map sheets 52P09SE (Rich Lake claim map) and 52P09NE (Opikeigen Lake claim map). The property is roughly 11 km by 5 km and covers an 11 km strike of volcano-sedimentary stratigraphy that includes a large gold mineralized system encompassing nine known gold occurrences.

The Opikeigen Property is owned 50/50 by Bard Ventures Ltd. (“Bard”) and SLAM Exploration Ltd. (“SLAM”) of Vancouver B.C. under the terms of a Joint Venture agreement dated March 3rd, 2006. In an Arrangement Agreement with Beatrix, Bard is transferring its interest to Beatrix. The Arrangement Agreement will provide shareholders of Bard with one tenth of one share of Beatrix for each share of Bard held by them.

Recorded exploration in the area began with the discovery of the Fort Hope Gold Mine (FHGM) on this property in 1927. Exploration and development took place rapidly under Fort Hope Gold Mines Limited. Several hundred metres of stripping and trenching were done and a 38m (125 ft) two-compartment shaft was sunk with 101m of lateral development at the 30m level.

The Opikeigen claim group was staked by Pure Gold Resources Inc. (Pure Gold) in 1986. Noramco Explorations Ltd. managed the property on behalf of Pure Gold from 1986 to 1990. SLAM Exploration Ltd. optioned the property from Pure Gold in 1997 and subsequently earned 50% interest. Adjacent claims covering the Fort Hope Gold Mine were acquired by staking in late 2000. These contiguous claims together comprise the Opikeigen Gold Project. In 2003, Bard acquired a 50% interest in the Project from Pure Gold. The property was optioned to TNR Resources Inc. who completed geophysical surveys and returned the property in 2004. Since that date, SLAM and Bard have owned and jointly funded exploration on a 50/50 basis.

The Opikeigen Lake property is situated within the Uchi Subprovince of the Superior Province, a subdivision of the Canadian Shield. The Uchi Subprovince is a 600-kilometre long greenstone belt that extends from Lake Winnipeg to the Hudson Bay Lowlands, hosting the Pickle Lake, Rice Lake, and world-famous Red Lake gold mining camps.

In the Opikeigen Lake area, the greenstone belt pinches to a 15 kilometre wide sequence of metavolcanics and metasediments bounded on the north by the Cluff Lake Stock and on the south by migmatite and paragneiss (Wallace, 1978). The belt is composed of east trending, isoclinally folded sequence of metavolcanic and metasedimentary rocks metamorphosed to upper amphibolite grade metamorphism (Wallace, 1978). An easterly trending anticlinal fold axis extends for a least 20 km from Lilypad Lakes along the north side of the Opikeigen Lake property and past Rond Lake.

A sequence of tuffs, sediments and iron formations referred to by Wallace (1978) as the “Northern Volcanic Belt” occupies the core of the antiform. The Northern Belt is capped on its northern and southern flank by an iron formation. It is overlain to the south by a “Central Sedimentary Belt” that trends along the south shore of Opikeigen Lake through Rond Lake. These sediments are overlain in turn by the “Southern Volcanic Belt”, comprising a basal sequence of felsic volcanoclastics and an upper sequence of mafic flows with intervals of sediments including iron formation.

Twelve gold occurrences have been discovered on the property to date, all except OL22 within mafic and felsic volcanic rocks of the Southern Volcanic Belt over a strike length of 11 kilometres. These include the Fort Hope Gold Mine (FHGM), Zone OL12, Zone OL29, Zone OL41, Rich Lake, Rond Lake, La Chib, OL08, OL17, OL18, OL22 and OL41-Extension. The FHGM and the Rich Lake occurrence date back to the original Fort Hope gold rush in the late 1920’s. The La Chib Occurrence was found by drilling to west of FHGM in 1980.

OL 12 Zone, was discovered during drill testing of geophysical anomalies (IP and HLEM). Auriferous quartz veins are hosted in sheared and altered pillow basalts and gabbro. A wide zone of wall rock alteration consists of quartz, biotite, and carbonate. Visible gold is reported in some drill holes usually near the contacts of altered wall rock with quartz veins. Three separate zones of mineralization have been intersected in drill core (A, B and C zones) all of which strike 050°, and dip steeply (70-90°) to the southeast. The zones have been traced for 50 metres along strike and to a depth of 200 metres. Four drill intersections ranged between 7.0 and 27.2 metres and returned 1.37 g/t to 6.22 g/t gold. Numerous narrower intervals contained much higher gold concentrations. Narrow intervals have returned in excess of 10 g/t gold. The best result reported was 1.37 g/t gold over 27.2 metres.

Although some attractive assays have been obtained from the Fort Hope Gold Mine no reserve tonnage has been calculated. For the FHGM, records show that in 1959 previous workers removed a 3105kg bulk sample that averaged 3.54 oz/ton gold (Wallace, 1978). Grab samples ranging up to 9.37oz/ton gold were reported from trenches soon after the discovery in 1927 (Burwash, 1929). An interesting intersection of 0.165 oz/t (5.66 g/t) over 0.5 m was made by La Chib Mines (1980) approximately 340 m due west and on strike (085°) within the FHGM shaft. The La Chib gold occurs in mineralized volcanic wallrock as well as quartz veins.

The cluster of zones and occurrences within the Opikeigen Lake property, particularly the 2 km strike length between OL29 Zone and OL41 Extension 29, is indicative of the presence of a significant gold mineralized system. SLAM Exploration's understanding the architecture of this system is evolving and is in process of developing a refined exploration strategy to further improve on the success ratio. The OL12 Zone is in the heart of this system. The system exhibits many proximal macro geological features that have been noted within Archean gold deposits worldwide that assist with the process of predictive mineral discovery.

The expenditures on the property from 1986 until SLAM's 2008 drill program total CDN \$1,892,225; with SLAM's 2008 drill program the total expenditures on the property from 1986 to the present are CDN \$2,255,812.

It is recommended that Beatrix's initial work on the project consist of a comprehensive compilation of all the previous work to produce a database to assist in identifying and prioritizing targets on the property, geochemical sampling and structural mapping. While this work will lead to new targets for drilling, or at least to modification of drill plans, it is the opinion of the authors that the existing drill targets on the property are "drill ready", and the known zones justify drilling in order to better define the zones, and to extend the zones along strike and at depth.

A budget of \$506,000 CDN is recommended to carry out the above work. It is the opinion of the authors that the property merits the described work program.

ITEM 4: INTRODUCTION

Clark Exploration Consulting of Thunder Bay, Ontario was contracted by Beatrix Ventures Inc. (“Beatrix”) of Vancouver, British Columbia, to review historic data for the Opikeigen Project (the “Property”), identify its merits, propose an appropriate exploration program and budget for gold exploration on the property, and prepare a Technical Report (the “Report”) compliant with NI 43-101 and suitable for the purposes of a financing document for Beatrix. The report and recommendations are based on:

- 1/ Public data archived at the Ministry of Northern Development and Mines, Thunder Bay Resident Geologist’s Office, Thunder Bay, Ontario, and on the MNDM website (www.geologyontario.mndm.gov.on.ca/);
- 2/ technical data derived from work conducted, supervised and/or documented by the exploration staff of SLAM Exploration Ltd.
- 3/ Numerous visits to the property by author R.T. Chataway during various exploration programs

ITEM 5: RELIANCE ON OTHER EXPERTS

The authors have relied on previous exploration reports as referenced in Section 23.0 References. These reports may or may not have been completed by qualified persons as defined by NI 43-101. After reviewing the reports and associated data the authors are satisfied the data presented is accurate.

ITEM 6: PROPERTY DESCRIPTION AND LOCATION

The Opikeigen Property is located in northwestern Ontario centered roughly at 425,000mE and 5,719,000mN UTM Zone 16, NAD83 within NTS map sheet 52P/09. The geographic coordinates are 51⁰37'N and 88⁰03'W approximately 150 km east of Pickle Lake, and approximately 10 km northwest of the settlement of Fort Hope, Ontario as shown on Figures 1 and 2. Direct access is available in summer months by boat and in winter by snowmobile from the Fort Hope community. Charters are available for float or ski-equipped aircraft from Pickle Lake and Nakina. Fort Hope and the Eabametoong First Nation community are served by daily scheduled flights originating out of Thunder Bay.

The Opikeigen Property is comprised of thirty-eight (38) unpatented mining claims, registered 100% to SLAM Exploration Ltd., totalling 259 claim units as listed in Table 1. The contiguous claim group is located in the Thunder Bay Mining District, Ontario on NTS map sheets 52P09SE (Rich Lake claim map) and 52P09NE (Opikeigen Lake claim map) as shown on Figure 3. The property is rectangular in shape, roughly 11 km by 5 km. It covers an 11 km strike of volcano-sedimentary stratigraphy that includes a large gold mineralized system encompassing nine known gold occurrences.

The Opikeigen Property is owned 50/50 by Bard Ventures Ltd. of Vancouver B.C. and SLAM Exploration Ltd. ("SLAM") of Miramichi, N.B. under the terms of a Joint Venture agreement dated March 3rd, 2006. In an Arrangement Agreement with Beatrix, Bard is transferring its interest to Beatrix. The Arrangement Agreement will provide shareholders of Bard with one tenth of one share of Beatrix for each share of Bard held by them.

The Opikeigen Property lies within the Traditional Territories of the Eabametoong First Nation ("EFN"). In accordance with current regulations in Ontario, Beatrix plans to work in consultation with EFN during the conduct of exploration activities on these properties.

Table 1. Opikeigen Project Claims

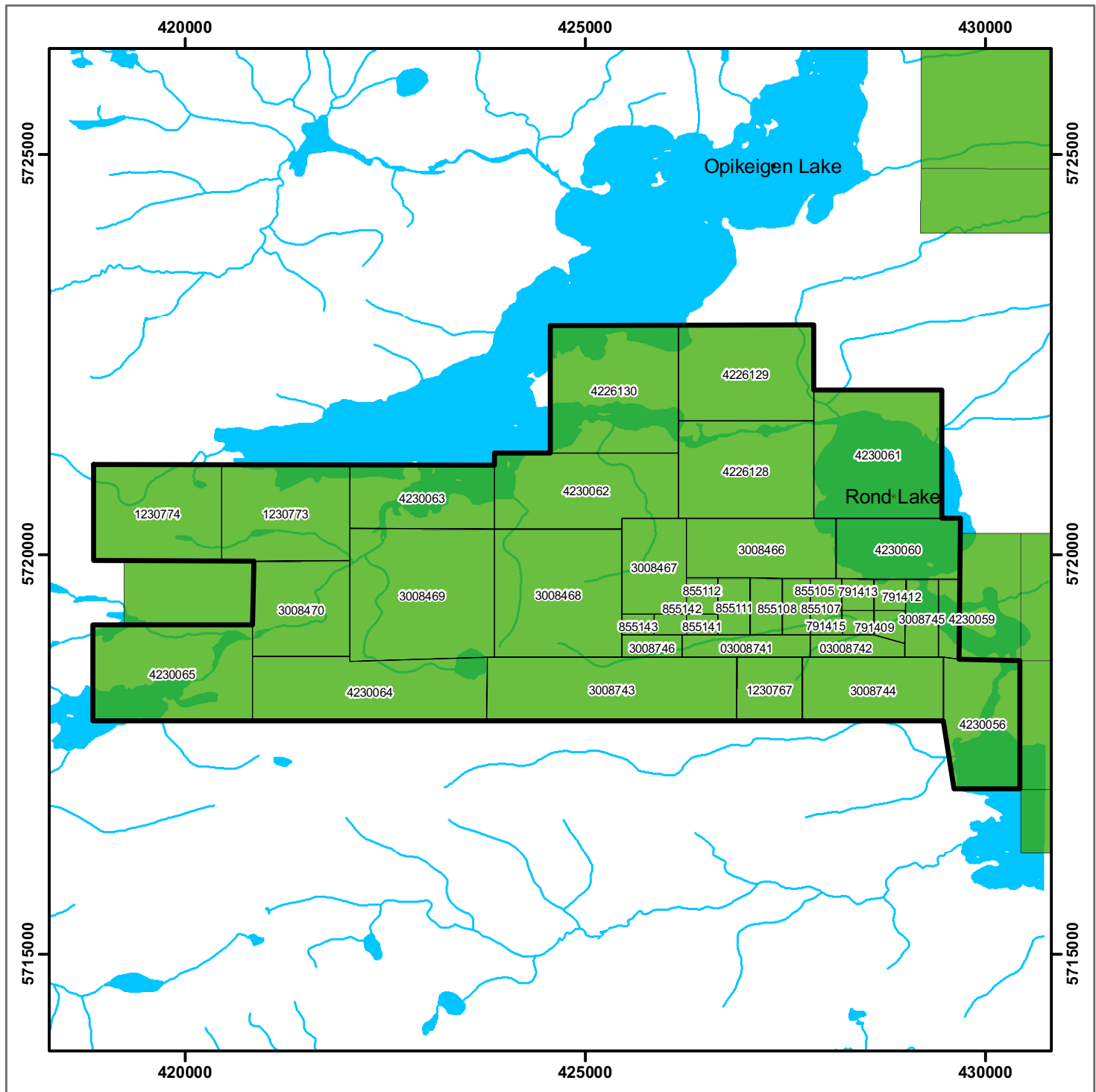
Claim No.	Township/Area	Date Recorded	Due Date	Work Required	Unit Size
1230773	Opikeigen Lake	2007-Sep-06	2011-Sep-06	\$ 4,800	12
1230774	Opikeigen Lake	2007-Sep-06	2010-Sep-06	\$ 4,800	12
3008469	Opikeigen Lake	2007-Sep-06	2011-Sep-06	\$ 6,400	16
3008470	Opikeigen Lake	2007-Sep-06	2011-Sep-06	\$ 3,600	9
4226128	Opikeigen Lake	2007-Oct-04	2011-Oct-04	\$ 4,800	12
4226129	Opikeigen Lake	2007-Oct-04	2011-Oct-04	\$ 4,800	12
4226130	Opikeigen Lake	2007-Oct-04	2011-Oct-04	\$ 6,400	16
4230060	Opikeigen Lake	2008-Apr-03	2011-Apr-03	\$ 3,200	8
4230061	Opikeigen Lake	2008-Apr-03	2011-Apr-03	\$ 6,400	16
4230062	Opikeigen Lake	2008-Apr-03	2011-Apr-03	\$ 4,800	12
4230063	Opikeigen Lake	2008-Apr-03	2011-Apr-03	\$ 3,200	8
4230064	Opikeigen Lake	2008-Apr-03	2011-Apr-03	\$ 5,600	14
3008741	Rich lake	2007-Apr-11	2011-Apr-11	\$ 1,600	4
3008742	Rich lake	2007-Apr-11	2011-Apr-11	\$ 1,200	3
1230767	Rich lake	2000-Dec-07	2011-Dec-21	\$ 1,600	4
3008466	Rich lake	2007-May-14	2011-May-14	\$ 3,200	8
3008467	Rich lake	2007-May-14	2011-May-14	\$ 3,200	8
3008468	Rich lake	2007-May-14	2011-May-14	\$ 6,400	16
3008743	Rich lake	2007-Apr-11	2011-Apr-11	\$ 6,400	16
3008744	Rich lake	2007-Apr-11	2012-Apr-11	\$ 3,200	8
3008745	Rich lake	2007-Apr-11	2011-Apr-11	\$ 1,200	3
3008746	Rich lake	2007-May-14	2011-May-14	\$ 800	2
4230056	Rich lake	2008-Apr-03	2011-Apr-03	\$ 4,000	10
4230059	Rich lake	2008-Oct-03	2010-Oct-03	\$ 800	2
4230065	Rich lake	2008-Apr-03	2011-Apr-03	\$ 6,000	15
791409	Rich lake	1986-Apr-25	2011-Dec-21	\$ 400	1
791412	Rich lake	1986-Apr-25	2011-Dec-21	\$ 400	1
791413	Rich lake	1986-Apr-25	2011-Dec-21	\$ 400	1
791414	Rich lake	1986-Apr-25	2011-Dec-21	\$ 400	1
791415	Rich lake	1986-Apr-25	2011-Dec-21	\$ 400	1
855105	Rich lake	1986-Apr-25	2011-Dec-21	\$ 400	1
855107	Rich lake	1986-Apr-25	2013-Apr-25	\$ 400	1
855108	Rich lake	1986-Apr-25	2011-Dec-21	\$ 400	1
855111	Rich lake	1986-Apr-25	2011-Dec-21	\$ 400	1
855112	Rich lake	1986-Apr-25	2011-Dec-21	\$ 400	1
855141	Rich lake	1986-Apr-25	2011-Dec-21	\$ 400	1
855142	Rich lake	1986-Apr-25	2011-Dec-21	\$ 400	1
855143	Rich lake	1986-Apr-25	2011-Dec-21	\$ 400	1
Totals				\$103,600	259



Beatrix Ventures Inc.
 Opikieigan Gold Project
 Location Map

Thunder Bay Mining Division
 NTS Sheet 52 P/09

Figure 1

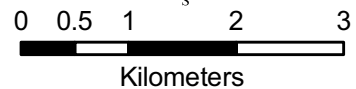


Opikeigan Gold Project

Claim Location Map

Opikeigan Lake / Rich Lake Areas

Figure 2



Legend

- Property Boundary
- Mining Claim
- Stream
- Lake / River

NAD 83 UTM Zone 16N
 NTS Mapsheet 52 P / 09
 November 29, 2009 - SS
 Clark Exploration Consulting

ITEM 7: ACCESSIBILITY, CLIMATE, LOCAL RESOURCES, INFRASTRUCTURE AND PHYSIOGRAPHY

The property can be accessed from Fort Hope by snowmobile in winter or boat in summer. Float or ski-equipped plane charters are available from the Ontario towns of Pickle Lake and Nakina. Fort Hope has an all season airstrip and is serviced daily by commercial flights originating from the city of Thunder Bay, Ontario located approximately 350 kilometres to the south. Fuel, equipment and bulk supplies can be delivered to Fort Hope via winter road from Pickle Lake. A portage trail connecting Eabemet Lake and Rond Lake passes close by (within 150 m) the Fort Hope Gold Mine, Zone OL12 and Zone OL29.

Accommodations are available in Fort Hope at the Construction Lodge owned by Eabametoong First Nation. Some construction equipment is available in Fort Hope. A variety of exploration services, including diamond drilling, assaying, outfitters and construction contractors are available in Thunder Bay.

Much of the topography in the vicinity of Fort Hope consists of wet bogs and muskeg, typical of the Canadian Shield. Topographic relief is generally low to flat-lying. Occasional hills and eskers are comprised primarily of glacial sand, gravel and rounded granitic boulders. Rock outcroppings are sparse, occurring in clusters along the glacial ridges and along streams and lake-shores.

The Opikeigen property is covered mainly by muskeg, bogs and lakes. Outcrops occur on the higher ground near the Fort Hope Gold Mine and the Rich Lake gold-tungsten occurrence. The better drained portions of the property are covered by open black spruce forest with large poplars from place to place. There are jack pine stands at a few localities on the property. The poorly drained areas are inhabited by stunted spruce, tamarack and tag alder. These make for difficult access in summer. The climate is sub-Arctic with a short summer field season. Opikeigen Lake is ice-free from early June to later October.

ITEM 8: PROPERTY HISTORY

The Opikeigen claim group was staked by Pure Gold Resources Inc. ("Pure Gold") in 1986. Noramco Explorations Ltd. managed the property on behalf of Pure Gold from 1986 to 1990. SLAM Exploration Ltd optioned the property from Pure Gold in 1997 and subsequently earned 50% interest. Adjacent claims covering the Fort Hope Gold Mine were acquired by staking in late 2000. These contiguous claims together comprise the Opikeigen Gold Project. In 2003, Bard Ventures Ltd. acquired a 50% interest in the Project from Pure Gold. The property was optioned to TNR Resources Inc. who completed geophysical surveys and returned the property in 2004. Since that date, SLAM and Bard have owned and jointly funded exploration on a 50/50 basis.

Recorded exploration in the area began with the discovery of the Fort Hope Gold Mine (FHGM) on this property in 1927. Exploration and development took place rapidly under Fort Hope Gold Mines Limited. Several hundred metres of striping and trenching were done and a 38m (125 ft) two-compartment shaft was sunk with 101m of lateral development at the 30m level.

This led to the discovery of the Rich Lake gold-tungsten occurrence, which is situated 7 km to the west and within the Opikeigen property. The occurrence is described as scheelite-bearing quartz veins associated with the contact area between mafic metavolcanics and felsic pyroclastics. A composite sample from the Rich Lake occurrence was reported to grade 0.13 ounces per ton gold (4.46 grams per tonne) and 0.65% W03 (Wallace, 1978).

The FHGM comprised two auriferous quartz vein systems that came to be known as the Shaft and California veins. Initial exploration and development were rapidly undertaken by Fort Hope Gold Mines Limited in 1927. Several hundred metres of trenching and stripping were completed over a strike length of 178 metres (Burwash, 1929). A 38 metre two compartment shaft was sunk and over 100 metres of lateral development completed on the 30 metre level. Work was discontinued in 1928 with no recorded gold production.

In 1934, the mine was dewatered by Fort Hope Consolidated Gold Mines Limited. Surface trenches and underground were channel sampled. According to Wallace (1978), 17 diamond drill holes totaling 1520 metres were drilled in 1935, and a further 17 holes for 1650 metres were drilled in 1946. However, reports from the 1935 period make no mention of diamond drilling. It is assumed here that only one program of drilling was carried out, along with a magnetic survey in 1946 by Golden Hope Mines Limited. Although original records are not available, the 1946 drilling is referenced in subsequent reports by Golden Hope and later workers located 11 of the drilling sites in the field (Bowdidge, 1979).

In 1958 Golden Hope completed a limited trenching and sampling program on the original workings and excavated a 3-ton bulk sample from the exposed vein

at the top of the shaft. Golden Hope transferred the property to Mr. B.B. Jessel in 1974. In 1978 the FHGM patented claims held by Golden Hope Mines for 50 years were allowed to lapse.

Spannex Resources Ltd. & La Chib Mines Ltd. (1979- 1980) produced a compilation and completed 12 miles of line cutting with associated magnetometer, VLF & geology surveys. Three drill holes were put down for a total of 537 feet of AQ core. A short hole, FH-80-01, of 149 feet, was drilled under the FHGM with no result. Hole FH-80-03 (271 ft) located approx 340 m due west of the FHGM shaft, had a 1.5 foot intercept of 0.165 oz/t (5.66 g/t) at a depth of 252 feet (La Chib occurrence).

Ohio Resources (1985 to 1990) completed line cutting, geology, soil geochemistry surveys and a total of 13 DDH's (3591 feet) from three drill programs in the surrounding area. The best intersection was 0.538 g/t over 3 feet in hole O-90-3.

Riley & Associates (1996) undertook a program of linecutting, geological mapping, sampling, a beep mat survey, and UV lamping of trench areas and diamond drill core.

Noramco Exploration Ltd. ("Noramco") explored the Opikeigen Gold property between 1986 and 1989 on behalf of Pure Gold. The property at that time did not include the Fort Hope Gold Mine claims. Noramco completed extensive ground and airborne geophysical surveys including magnetometer, VLF-EM, HLEM and induced polarization (IP) surveys, humus geochemistry, prospecting, geological mapping, trenching and channel sampling. Testing of geophysical targets by drilling resulted in discovery of the Zone OL12 and Zone OL29 gold occurrences. Prospecting and detailed mapping resulted in the discovery of Zone 41, the Zone 41 Extension and the Rond Lake occurrence.

A total of fifty-seven (57) diamond drill holes, totaling 9811.8 metres, tested Zones OL12, OL29, and OL41 and other targets including the Rich Lake occurrence.

Zone 12 was defined over a strike length of 40 metres and a depth of 200 metres. Four drill intersections ranged between 7.0 and 27.2 metres in width and returned 1.37 to 6.22 grams per tonne gold. Numerous narrower intervals contained much higher gold concentrations. Results from Zone 29 returned 1.0 to 2.1 grams per tonne gold over generally broad intervals (up to 12.3 metres, averaging 5.52 metres) over a strike length of 450 metres. The best result was 1.66 grams per tonne gold over 12.3 metres. The Opikeigen core racks and boxes were destroyed by a forest fire in 1995.

Between 1997 and 1999, SLAM completed line cutting, geological mapping, rock sampling, prospecting, humus geochemistry and ground geophysical surveys (magnetometer, VLF-EM and IP). In 2000, SLAM completed ground geophysical

surveys and diamond drilling totaling six (6) drill holes. Two (2) holes were drilled on Zone 12 (Drill Holes OLOO-01 & 06) and one (1) drill hole was drilled on Zone 29 (Drill Hole OLOO-02). The remaining three (3) holes were drilled on various geophysical and geochemical targets. An IP / resistivity survey, totaling 10.2 line kilometres, was completed under contract by IPTEC Ltd. in the southeastern portion of the property in 2000. SLAM conducted a limited prospecting exercise in 2002.

In October 2007 a prospecting exercise consisting of 15 grab samples was completed on the rock dumps surrounding the Fort Hope Gold Mine to validate previous historical observations. During the period April 08 to May 01, 2008, SLAM Exploration Ltd, drilled 9 holes totaling 910.7 meters on the Opikeigen Property. All drill holes were drilled in the metric system and all core obtained was BQ-TK size. Casing was left in place for all holes. The drill core is on banded pallets, stored in a semi-secure location behind Ministry of Transport outbuildings close to the Fort Hope Airstrip.

The target areas for the 2008 drilling were the OL12 Zone and the Ft. Hope Gold Mine site. Two holes, FH0801 and FH0802, were completed on the east extension of the OL12 Zone. These were drilled from the same setup at dips of -60° and -50° along a bearing of 180° and were 12.5m east and 12.5m north of hole OL8846 (see Figure 6).

Six holes (FH0803 to FH0808 plus FH0807A) were placed close to the Fort Hope Gold mine proximal to the "Shaft Vein" & "California Vein". Hole FH0807A is a duplicate of FH0807 which was abandoned at 51.8m. The drilling plan was based upon historical mine sketches and geological notes and designed to test the Shaft and California veins near the old mine shaft. Holes FH0803 (-45) and 04 (-60) were drilled on-section (4013N) in a north westerly direction from the east side of the shaft. Holes FH0805 (-45) and 06 (-60) were drilled on-section (4000N) on the west side of the shaft. Hole FH0805 was abandoned when it hit into a drift. Hole FH0806 successfully reached its depth of 106.7 m. The last two holes in the area were collared ahead of the previous setup with the target being the shaft vein. Hole FH0807 (-50) had to be abandoned due to equipment failure and was restarted just off the original hole.

Hole FH0807A cut the projected shaft vein and was extended to reach the up dip projection of the vein at the bottom of hole FH0806 which may be represented by a quartz-carbonate vein at 94 m. Hole FH0808 was planned to cut the shaft vein near the anticipated intersection of the failed attempt in hole FH0805 which hit the drift. Many narrow 1 to 10 cm wide quartz-carbonate veins were sampled throughout the holes, some with minor sulphides.

Fort Hope Gold Mine Prospecting (by SLAM)

Fifteen grab samples were taken from rock rubble piles in the immediate FHGM area in early October 2007. All samples contained elevated Au levels ranging from 38 ppb to 68,489 ppb, eight of which showed significant values over 1.0 g/t. Three samples returned over 1.0 oz/t with the highest being 1.998 oz/t similar to high grades reported by previous workers dating back to discovery by Lorne Howey in 1927. This gold occurs in mineralized volcanic wallrock as well as quartz veins. (see Table 2 below for values and co-ordinates).

Table 2: FHGM Grab Sample Co-ordinates and Values (NAD 83, Zone 16)

Sample	UTM East	UTM North	Gold ppb	Gold oz/t
162201	427832	5718334	8431	0.246
162202	427721	5718314	24392	0.711
162203	427715	5718311	44802	1.307
162204	427710	5718308	10456	0.305
162205	427712	5718310	68489	1.998
162206	427709	5718315	346	0.010
162207	427671	5718310	4542	0.132
162208	427690	5718326	75	0.002
162209	427687	5718321	62	0.002
162210	427691	5718307	285	0.008
162210	427691	5718307	392	0.011
162211	427691	5718300	34316	1.001
162212	427690	5718300	38	0.001
162213	427690	5718300	237	0.007
162214	427690	5718300	241	0.007
162215	427690	5718300	2519	0.073

From the SLAM Exploration 2000 drilling two additional holes were completed on the OL12 Zone. Both drill holes OLOO-01 and 06 intersected a diabase dyke(s) at the location of the targeted gold mineralized zone. The best result obtained was in drill hole OLOO-01 in which an interval of 2.88 grams per tonne gold over 0.6 metres was reported along the upper contact of a diabase dyke, suggesting the zone was cut off by the dyke at this location.

The intent with the 2008 drilling at the OL12 zone was to step to the east to miss the dyke and hit the target zone (from OL8846 and OL8849) at a two different depth levels. The lower hole (FH0801) flattened much more quickly than anticipated and did not quite intersect the target zone as deep as was intended - the possibility of excessive unintended hole deviation being a short coming of the BQ thin kerf drill string. Both holes FH0801 and FH0802 missed the diabase dyke as intended and while encouraging in terms of mineralized width in the

FH0801 hole (0.79 g/t over 5.0 m), the assays did not match those of OL8846 & OL8849. For hole FH0801, the target zone was a 21 m (core length) semi-massive pyrrhotite with lesser pyrite at top of section and a magnetite component lower down within a mafic flow unit. Carbonate and biotite alteration were noted. This target zone was not very well developed in hole FH0802. What was clearly shown is a vertical zonation with the better numbers occurring deeper and to the west. The small mineralized spike in the FH0802 hole (1.42 g/t over 0.5 m) at the same elevation as the mineralized zone in the FH0801 hole is associated with quartz veining not the massive pyrrhotite-silicified-pyritic-magnetite interval that was targeted.

Fort Hope Gold Mine

In the Ft. Hope Gold Mine area, 6 holes were drilled based on the historical mine plans and geological notes (see Figure 7). The targeted veins (Shaft and California) were near the old mine shaft. Holes FH0803 (-45) and FH0804 (-60) were drilled on-section (4013N) in a north westerly direction from the east side of the shaft. The upper hole FH0803 returned two narrow quartz veined intersections with 1.3 g/t over 0.75 m and 1.2 g/t over 0.5 m which appear to be the respective California Vein and the Shaft Veins. The lower hole FH0804 did not manifest significant Au values and the conclusion is that both these veins are pinched or boudined in at this juncture.

Holes FH0805 (-45) and 06 (-60) were drilled on-section (4000N) on the west side of the shaft. Hole FH0805 was abandoned when it hit into a drift. Hole FH0806 successfully reached its depth of 106.7 m. Many narrow 1-10 cm wide quartz-carbonate veins hosted by the mafic flows were encountered. Near the expected interval of the Shaft Vein (63.5 m) a 4 cm quartz vein resulted in an assay 0.6 g/t gold over 0.5 m. A narrow feldspar porphyry at 94 m is associated with a series of assays with anomalous gold in the range of 100 to 200 ppb. might correlate with a narrow porphyry at the shaft and associated with it was a series of quartz-carbonate-chlorite veins with pyrrhotite and minor pyrite over short core lengths of less than a meter.

The last two holes in the area were collared approximately 16 metres to SE of the previous setup, with the same orientation, the target being the Shaft Vein. Hole FH0807 (-50 dip) had to be abandoned due to equipment failure and was restarted just off the original hole. It was intended to cut the projected Shaft Vein, but did not appear to do so. FH0807A was extended to reach the up dip projection of the veins at the bottom of hole FH0806. With the exception of a narrow 0.83 g/t over 0.8 m in the original FH0807 hole that co-relates to a minor interval also encountered in FH0808 results were disappointing. Hole FH0808 with a dip of -80 was planned to cut the shaft vein near the anticipated intersection of the failed attempt in hole FH0805 which hit the drift. This did not materialize, instead at the very top of the hole a reasonable intersection of 4.02 g/t over 0.5 m was encountered. It appears that the FH0807 & FH0807A holes

would have just missed this interval due to depth of overburden. It appears that the Shaft Vein orientation has swung to a more East-West direction at this juncture. Combine this with the projected strike trend of 085° intercept approximately 330 metres to the west at the La Chib occurrence of similar grade suggests that the Shaft Vein may have a horizontal continuity with associated pinching and swelling to the west. Therefore from the aspect of trying to locate the Shaft Vein to the west of the FHGM the 2008 drill program is deemed to be successful in detecting a gold-bearing structure.

The 2008 drilling program was designed to evaluate two known gold occurrences; the OL12 Zone and the FHGM. Results of the drilling program by drill hole are briefly discussed below; all intervals reported are core length. Analytical results are presented in Appendix I

The OL12 Zone is in the heart of a 3 km long cluster of zones and occurrences within the Opikéigen Lake property. From the Noramco 1987 drilling, the best mineralization of these zones was intersected in Zone 12, which was defined over a strike length of 40 metres and a depth of 200 metres. Four drill intersections ranged between 7.0 and 27.2 metres in width and returned 1.37 to 6.22 grams per tonne gold. Numerous narrower intervals contained much higher gold concentrations.

Cartwright Drilling Limited, Goose Bay Labrador, completed under contract nine (9) diamond drill holes (Drill Holes FH0801 to FH0808) totaling 910.7 meters of thin kerf BQTK core between April 08 and May 01, 2008 utilizing a heli-portable diamond drill rig. The drill was mobilized to Fort Hope via the winter road from Pickle Lake late March 2008 and demobilized to Pickle Lake via Nakina Air Service on May 21st 2008.

The geologists and drill crew stayed in Ft. Hope at the ELC Camp run by the Eabametoong First Nation. Geotechnical support was provided by 3 men from Ft. Hope who also helped on the drill moves and drill set ups. Access to the drill sites was via helicopter from the Fort Hope airstrip. Forrest Helicopters Inc., Kenora, Ontario was contracted by SLAM Exploration to provide an Astar (AS360 BA) helicopter for drill moves, crew shift changes and other helicopter related support services.

Field supervision and implementation of the drilling program was handled by the co-author (R. Chataway) under the overall direction of Michael R. Taylor, P.Geo, President of SLAM Exploration Ltd. The program was designed by M. Taylor and Derek Brown, P.Geo, Exploration Manager for SLAM Exploration. Bob Chataway P.Geo. supervised the project with assistance from Jim Michaelis B.Sc. (Geol).

The Fort Hope area has been the subject of numerous government mapping programs, notably Burwash (1929); Prest (1942) and Wallace (1978). In 2003 an

airborne magnetic, electromagnetic and radiometric survey was released by Province of Ontario under Operation Treasure Hunt.

The expenditures on the property from 1986 until SLAM's 2008 drill program total CDN \$1,892,225; with SLAM's 2008 drill program the total expenditures on the property from 1986 to the present are CDN \$2,255,812.

ITEM 9: GEOLOGICAL SETTING – REGIONAL, LOCAL AND PROPERTY GEOLOGY

Regional Geology (refer to Figure 3)

The following descriptions of the regional and property geology and mineralization were summarized from previous reports by Eastwood (2001), and Riley (1996).

The Opikeigen Lake property is situated within the Uchi Subprovince of the Superior Province, a subdivision of the Canadian Shield. The Uchi Subprovince is a 600-kilometre long greenstone belt that extends from Lake Winnipeg to the Hudson Bay Lowlands, hosting the Pickle Lake, Rice Lake, and world-famous Red Lake gold mining camps.

In the Opikeigen Lake area (Figure 3), the greenstone belt pinches to a 15 kilometre wide sequence of metavolcanics and metasediments bounded on the north by the Cluff Lake Stock and on the south by migmatite and paragneiss (Wallace, 1978). The belt is composed of east trending, isoclinally folded sequences of metavolcanic and metasedimentary rocks metamorphosed to upper amphibolite grade metamorphism (Wallace, 1978). An easterly trending anticlinal fold axis extends for a least 20 km from Lilypad Lakes along the north side of the Opikeigen Lake property and past Rond Lake.

A sequence of tuffs, sediments and iron formations referred to by Wallace (1978) as the "Northern Volcanic Belt" occupies the core of the antiform. The Northern Belt is capped on its northern and southern flank by an iron formation. It is overlain to the south by a "Central Sedimentary Belt" that trends along the south shore of Opikeigen Lake through Rond Lake. These sediments are overlain in turn by the "Southern Volcanic Belt", comprising a basal sequence of felsic volcanoclastics and an upper sequence of mafic flows with intervals of sediments including iron formation.

The Southern Volcanic Belt hosts all the important gold deposits found on the property to date. These include the Fort Hope Gold Mine, Zone OL12, Zone OL41 and Zone 41 Extension all hosted within the mafic sequence. The felsic tuff unit is host to the OL17, OL18 and OL29 gold occurrences as well as the Rich Lake gold-tungsten deposit.

The Southern Volcanic Belt is bounded to the south by a 2 kilometre wide section of metasediments. These include banded black and grey quartz biotite schists often with coarse garnet and staurolite metacrysts. These greywacke-derived schists are interbanded with quartz-sericite schists and Algoma-type iron formation (Wallace, 1978). The schists are intruded by pods, dykes and sills of coarse white pegmatite that increase in abundance southward as the sediments grade into a 3 kilometre wide migmatite–paragneiss zone surrounding a large granitic body to the south.

Property Geology

The rocks in the Opikeigen Lake area are folded about an isoclinal, easterly trending anticlinal axis trending along Eabamet River and westward through Lilypad Lakes area (Wallace 1978). This regional structure is supported by pillowed flow tops indicated as southward-facing near the Fort Hope Gold Mine and northward-facing in the Lilypad Creek area (Prest, 1942). Aeromagnetic maps suggest a fold closure of the iron formation just east of Rond Lake with a similar closure reflected 20km to the west near Lilypad Lakes.

The geology of the Opikeigen Lake property is divided by Wallace (1978) into four easterly trending belts of alternating metavolcanic and metasedimentary rocks. The northernmost domain, the 'Northern Volcanic Belt', is a 2 km wide steeply dipping sequence comprised mainly of felsic tuffs with narrow mafic flow intervals and interbedded with graphitic argillite along with sulphide and oxide iron formation. These are interpreted as the oldest rocks on the property as they occupy to core of the anticlinal axis postulated by Wallace (1978).

The Northern Volcanic belt is bounded by two magnetic trends, interpreted as iron formation, which parallel each other on opposite sides of the anticlinal axis extending from Rond Lake along Eabamet River westward to the Lilypad Lakes area where "Algoma-type" iron formation can be observed up to 8 metres thick in outcrop (Wallace 1978). These iron formations occur near the stratigraphic top of the Northern Volcanic Belt. Previous workers postulate that this sequence is terminated by a fault trending northerly through Rond Lake but there is no direct evidence of this fault. Aeromagnetic maps suggest a fold closure of the iron formation 4 km east of Rond Lake with a similar closure reflected 20km to the west near Lilypad Lakes.

Three diamond drill holes OL8708, OL8722 and OL8723 by Noramco (Taylor, 1989) were drilled within the Northern Volcanic belt. All 3 holes intersected felsic to intermediate lapilli tuffs and crystal tuffs with minor argillites and one mafic tuff interval. Thin sulphide iron formations as well as graphitic horizons were logged. The volcanic rocks are locally silicified and mineralized with disseminated pyrite, pyrrhotite and arsenopyrite and contain weakly anomalous gold contents up to

170 ppb. A zone of quartz-carbonate veining in hole OL8722 assayed 1.178 g/t gold over 0.9m.

The Northern Volcanic Belt is overlain to the south by 2 km wide sequence of sediments referred to as the 'Central Metasedimentary Belt' by Wallace (1978). This unit is primarily comprised of metasediments, primarily sandstones, siltstones and argillites in an area of very limited exposure and generally low magnetic signature. A series of conductive trends within this unit are associated with graphitic argillites with up to 10% pyrite–pyrrhotite mineralization as reported from several drill holes by Noramco in 1987. The Central Belt is capped to the south by a conductive and magnetic unit comprised of graphitic argillites interbedded with sulphide iron formation and is overlain southward by felsic tuffs of the "Southern Metavolcanic Belt".

The Southern Metavolcanic Belt is host to the majority of gold occurrences on the property. This belt consists of a sequence of felsic pyroclastic rocks which are stratigraphically overlain to the south by a thick succession of mafic flows and pillow basalts with minor mafic tuffs and intermediate pyroclastic units. Interflow sediments include several thin sulphide exhalite layers within the mafic and felsic volcanics and at least two horizons of oxide facies iron formation occur between individual mafic flows. A sill-like gabbroic intrusive occurs in the hanging wall of Zone 12. Similar gabbroic bodies occur south of the Fort Hope Gold Mine. These intrusions have been subject to various degrees of shearing, ranging from minor brittle cracking to mylonitization. Quartz porphyry, feldspar porphyry and quartz feldspar porphyry dykes commonly cross cut mafic volcanic units and the gabbro sills. A swarm of north trending porphyry dykes cut both the mafic volcanics and gabbro bodies. A granodiorite plug is associated with a magnetic feature located just east of the Fort Hope Gold Mine.

The Fort Hope Gold Mine area is underlain mainly by a thick succession of mafic flows and pillow basalts with minor mafic tuffs and intermediate pyroclastic units. These mafic flows are bounded to the north by an easterly trending shear zone which controls the gold-bearing mineralization in Zones OL12, 29 and 41. The Shaft Vein and California Vein are hosted in a shear near the contact between basalt flows and mafic agglomerates and tuffs. The bulk of the rocks exposed in the shaft area on the ridge in the southeast corner of the property are made up of a repetitive sequence of fine-grained mafic metavolcanic flows. The flows are most typically massive but pillowed components probably make up 25% of the sequence. As displayed in outcrop pillows range from a few centimeters to a couple meters in length, and length to width ratios range from 3:1 to 6:1. Flow contacts appear to be generally sharp and were noted to be marked by a) quartz feldspar porphyry sills, b) quartz veins, c) minor amounts of fine-grained rusty sediment ranging from a few inches to 60 cm. thick, and d) narrow shear zones. Occasionally, flow top or bottom breccias also appear to be present. The flows range in thickness up to 30 meters. Tops appear to face south. The two small outcrops west of the tote road are fine grained massive mafic volcanics not unlike

those exposed in the shaft area. The shaft area is mainly underlain by mafic flows with a couple of feldspar porphyry dykes ranging up to 4 m wide. Tuff, agglomerate and metagreywacke outcrops just to the south-east of the FHGM trend between 085° and 095° with a dip of 75° to the south (Brown 1980).

Primary rock units on the property generally strike in an east southeasterly direction, except for a flexural area surrounding the OL29, OL 12 and OL 41 zones, where most of the units strike toward the northeast at 065°. Minor scale isoclinal folding occurs near the Rich Lake gold-tungsten occurrence at the west end of the Opikeigen property. Several fault structures have been interpreted from topographic and magnetic data lineaments. These lineaments are supported by evidence of shearing observed in almost every outcrop investigated by SLAM Exploration in the 1997 field program. Shear zones observed in outcrop range in size from 10 centimetres to over 5 metres in width. Three distinct directions of shearing have been observed on the property, trending 050°, 065° and 090°. Most of these structures are vertical to steeply southeast dipping with sinistral displacement. The 050° shears have only been observed in mafic volcanics in the Zone 12 and Zone 29 area. They are generally less than 20 centimetres wide and contain fine grained, strongly foliated chlorite sericite with small quartz veins and boudins commonly found along the shear plane. The 065° shears, observed property wide, transect all rock types and are parallel to lineaments based on topographic, magnetic and electromagnetic data. Southeast of the Fort Hope Gold Mine, these shears range up to metre wide zones of strongly foliated chloritic gouge with 5 to 25 centimetre thick quartz veins and boudins. The 090° shears have been observed in drill core from Zone 12 or Zone 29 and in outcrop at Zone 41, Zone 41 Extension and the Southeast Gabbro area. Zones 12, 41 and 41 Extension occur along a topographic and magnetic lineament trending 090° that extends past the south flank of Zone 29.

Table 3. Table of Lithological Units*(from Wallace 1978)***PHANEROZOIC**

CENOZOIC

QUATERNARY

RECENT

Sand, carbonaceous mud (lacustrine and swamp deposits)

PLEISTOCENE

Till, sand, boulders (moraine and esker deposits)

*UNCONFORMITY***PRECAMBRIAN**

EARLY PRECAMBRIAN (ARCHEAN)

FELSIC TO INTERMEDIATE INTRUSIVE ROCKS

Granodiorite, quartz monzonite, quartz diorite; biotite and hornblende-biotite granite and quartz monzonite; monzonitic to trondhjemitic albite porphyry; quartz porphyry, quartz-feldspar porphyry; hornblende-plagioclase porphyry; pegmatite, aplite.

RELATIONSHIP UNCERTAIN

MAFIC INTRUSIVE ROCKS

Diorite, gabbro (sills and dikes)

*INTRUSIVE CONTACT*METASEDIMENTS¹Quartz-biotite and garnetiferous biotite schists²; arkosic arenite; greywacke, feldspathic greywacke, arkosic wacke; slate, phyllite, argillite, siltstone, sericitic schist; quartz arenite, subarkose, quartz-muscovite schist; conglomerate; staurolite schist, sillimanite-staurolite schist; migmatite, paragneiss; banded quartz-magnetite iron formation.METAVOLCANICS¹

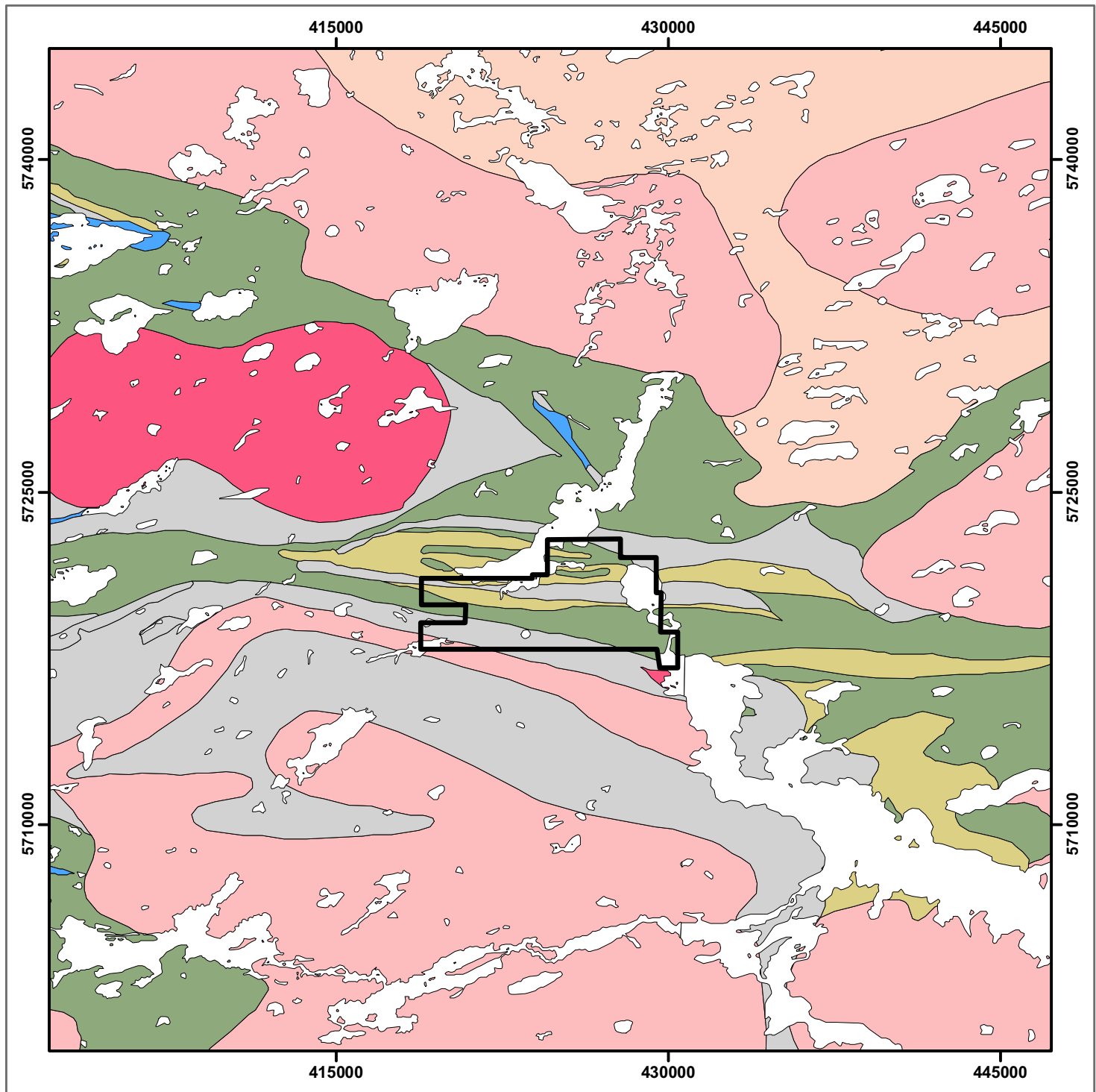
Felsic to Intermediate Metavolcanics

Massive, flow-banded and spherulitic lavas; tuff, crystal tuff, laminated tuff; lapillituff; tuff-breccia, pyroclastic breccia, agglomerate; autoclastic breccia; quartz porphyry³, quartz-feldspar porphyry³ and feldspar porphyry³.*INTERCALATED IN PART*

Mafic to Intermediate Metavolcanics

Massive and layered amphibolite; garnetiferous amphibolite⁴; chlorite schist; massive and pillow lavas, basaltic to andesitic; autoclastic breccia; agglomerate; tuff, lapillituff; coarse amphibolite³; chert; banded quartz-magnetite iron formation.

1. Metavolcanics and metasediments are interbanded, sequence does not imply age.
2. May in part be derived from intermediate metavolcanics.
3. May in part be intrusive.
4. May in part be derived from calcareous metasediments.

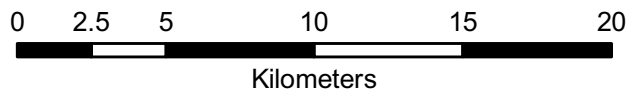


Opikeigan Gold Project Regional Geology

Opikeigan Lake & Rich Lake Areas, Thunder Bay Mining Division



Figure 3



Legend

- Property Boundary
- ⊗ Lake / River
- 15 Massive granodiorite to granite
- 12 Foliated tonalite suite
- 11 Gneissic tonalite suite
- 10 Mafic and ultramafic rocks
- 8 Migmatized supracrustal rocks
- 7 Metasedimentary rocks
- 7c Marble, chert, iron formation, minor metavolcanic rocks
- 6 Felsic to intermediate metavolcanic rocks
- 5 Mafic to intermediate metavolcanic rocks

NAD 83 UTM Zone 16N
 NTS Mapsheet 52 P / 09
 November 29, 2009 - SS
 Clark Exploration Consulting

1:250 000 Scale Bedrock Geology of Ontario,
 Ontario Geological Survey
 Miscellaneous Release Data 126 - Revised

ITEM 10: DEPOSIT TYPES

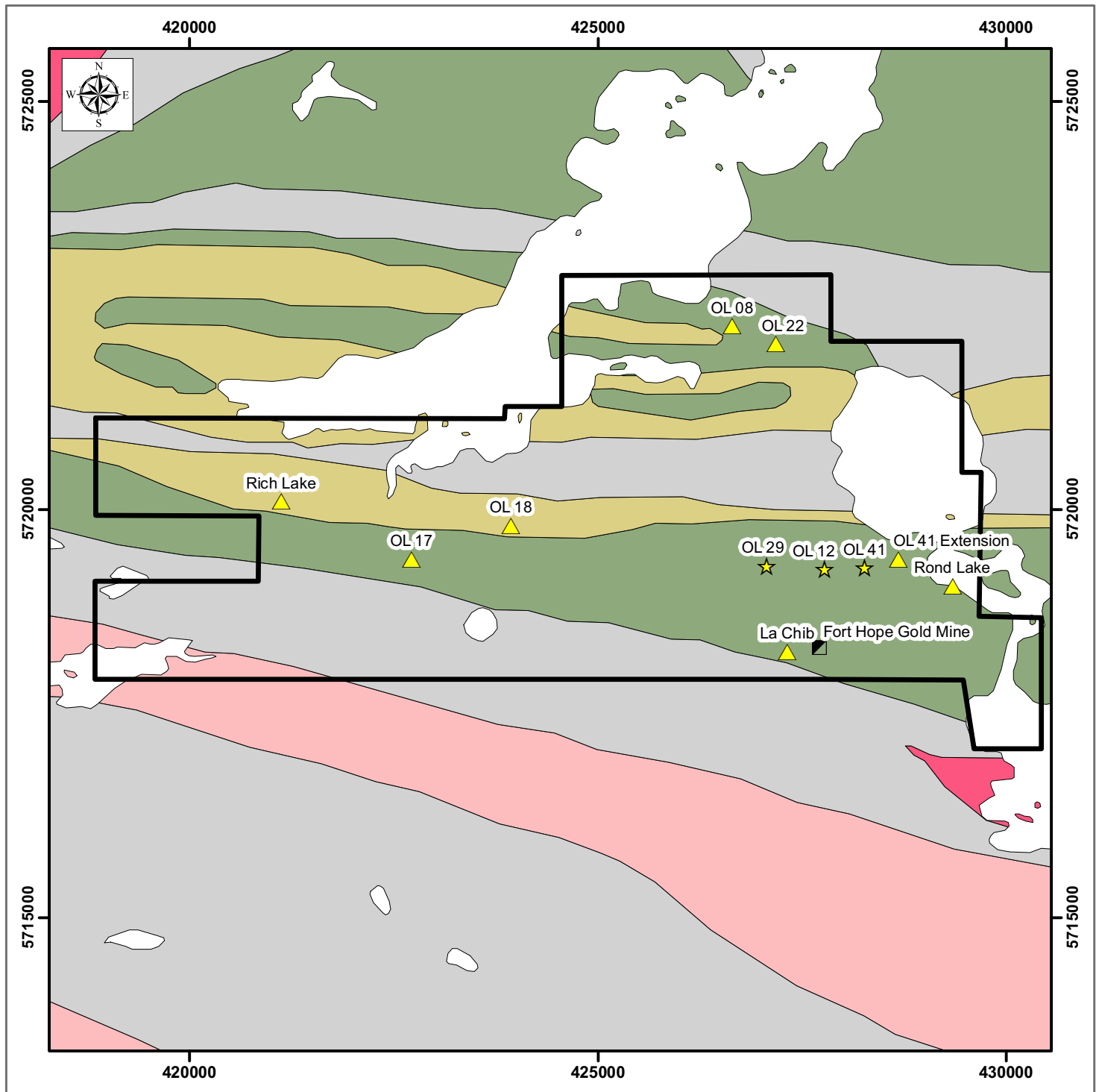
Gold deposits in the Fort Hope area can be divided into the following types (Mason and White, 1995) :

1. Gold veins in mafic metavolcanics rocks +/- porphyry (FHGM)
2. Quartz veins, silicification and carbonatization in clastic metasedimentary rocks
3. banded iron formation and arsenopyrite or pyrrhotite association
4. quartz veins + feldspar porphyry and antimony association in mafic volcanic rocks
5. feldspar +/- quartz porphyry, silicified and sheared
6. quartz-tourmaline veins in wackes
7. strongly foliated to sheared mafic to felsic metavolcanics rocks (Zones OL12, OL29)
8. quartz-tungsten veins +/- strong foliation and shearing with pyrite-pyrrhotite-magnetite (Rich Lake Occurrence)

Gold deposits occur in 3 general settings on the Opikeigen Lake Property. Gold is associated with quartz veins and shear zones hosted in the mafic volcanic sequence which includes pillow basalts, mafic tuffs, intercalated sediments including iron formation and gabbro. Mineralization in the auriferous veins includes up to 1% pyrite/pyrrhotite along with traces of galena, molybdenite and, rarely visible gold. Gold commonly occurs in the wall rocks within envelopes of quartz, biotite, and carbonate alteration. In some drill holes gold occurs in near-solid sulphide mineralization (pyrite-pyrrhotite) adjacent to the veins. These sulphide units appear to grade laterally into oxide iron formations.

Gold occurs in a stratiform setting within felsic volcaniclastic rocks where it is associated with pervasive silification and carbonate alteration and fine-grained, disseminated pyrite mineralization.

Gold is associated with porphyry dykes and sills in and around the Fort Hope Gold Mine and Zone OL12.



Opikeigan Gold Project

Geology with Past Producing Mines, Zones, and Occurrences

Figure 4

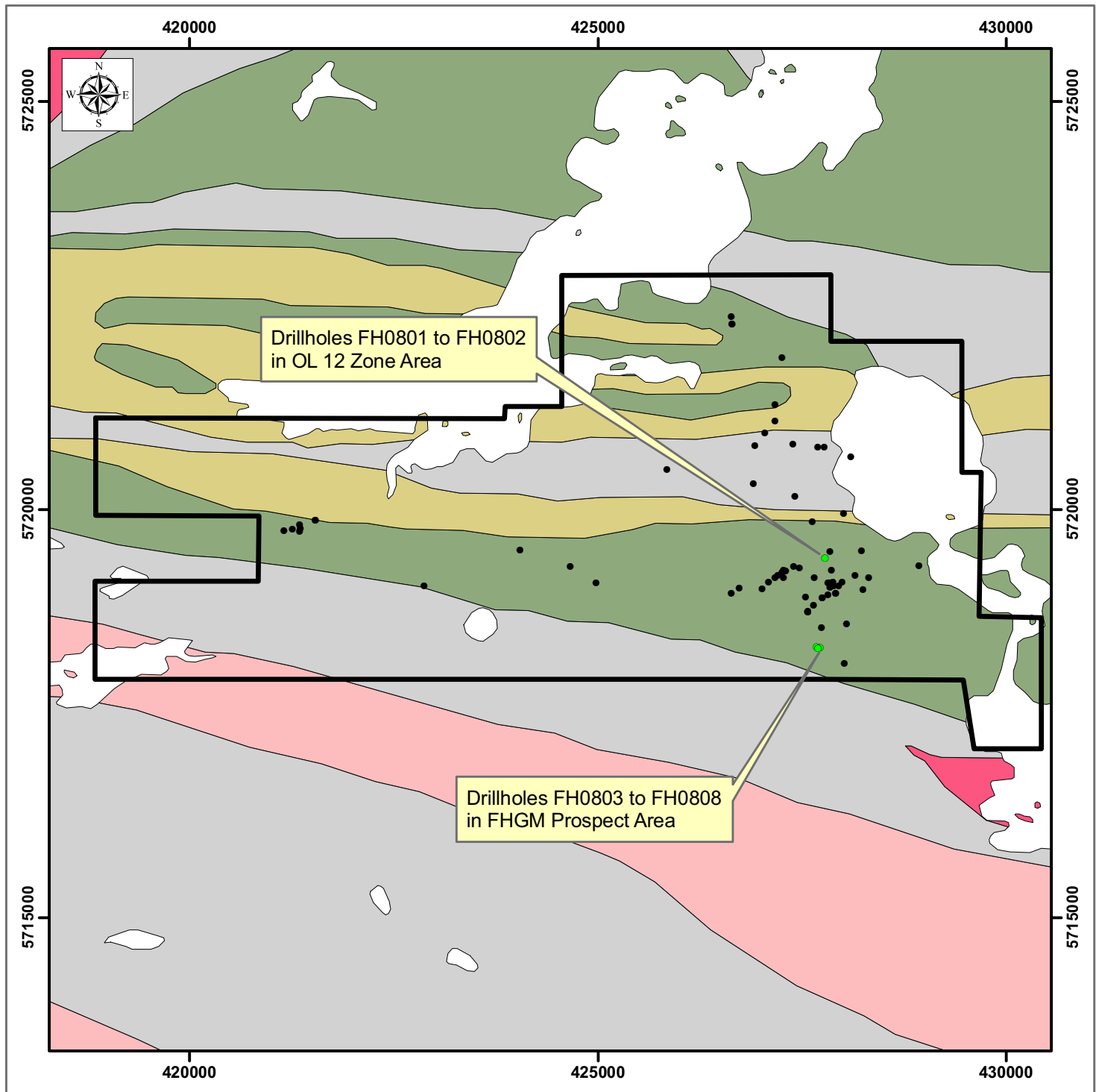


Legend

- Gold Showings**
- Type
- ▣ Mine (Past Producer)
- ▲ Occurrence
- ★ Zone
- ▬ Property Boundary
- Lake / River
- Bedrock Geology**
- 15 Massive granodiorite to granite
- 12 Foliated tonalite suite
- 7 Metasedimentary rocks
- 6 Felsic to intermediate metavolcanic rocks
- 5 Mafic to intermediate metavolcanic rocks

NAD 83 UTM Zone 16N
NTS Mapsheet 52 P / 09
December 1, 2009 - SS
Clark Exploration Consulting

1:250 000 Scale Bedrock Geology of Ontario,
Ontario Geological Survey
Miscellaneous Release Data 126 - Revised



Opikeigan Gold Project

Geology with Drilling

Figure 5



NAD 83 UTM Zone 16N
 NTS Mapsheet 52 P / 09
 December 1, 2009 - SS
 Clark Exploration Consulting

1:250 000 Scale Bedrock Geology of Ontario,
 Ontario Geological Survey
 Miscellaneous Release Data 126 - Revised

Legend

- 2008 Drilling
- Historical Drilling
- ▭ Property Boundary
- ▭ Lake / River
- Bedrock Geology
- 15 Massive granodiorite to granite
- 12 Foliated tonalite suite
- 7 Metasedimentary rocks
- 6 Felsic to intermediate metavolcanic rocks
- 5 Mafic to intermediate metavolcanic rocks

ITEM 11: MINERALIZATION

Twelve gold occurrences have been discovered on the property to date, all except OL22 within mafic and felsic volcanic rocks of the Southern Volcanic Belt over a strike length of 11 kilometres. These include the Fort Hope Gold Mine (FHGM), Zone 12, Zone 29, Zone 41, Rich Lake, Rond Lake, La Chib, OL08, OL17, OL18, OL22 and 41-Extension. The FHGM and the Rich Lake occurrence date back to the original Fort Hope gold rush in the late 1920's. The La Chib Occurrence was found by drilling to west of FHGM in 1980.

OL 12 Zone, was discovered during drill testing of geophysical anomalies (IP and HLEM). Auriferous quartz veins are hosted in sheared and altered pillow basalts and gabbro. A wide zone of wall rock alteration consists of quartz, biotite, and carbonate. Visible gold is reported in some drill holes usually near the contacts of altered wall rock with quartz veins. Three separate zones of mineralization have been intersected in drill core (A, B and C zones) all of which strike 050°, and dip steeply (70-90°) to the southeast. The zones have been traced for 50 metres along strike and to a depth of 200 metres. Four drill intersections ranged between 7.0 and 27.2 metres and returned 1.37 g/t to 6.22 g/t gold. Numerous narrower intervals contained much higher gold concentrations. Narrow intervals have returned in excess of 10 g/t gold. The best result reported was 1.37 g/t gold over 27.2 metres.

The Fort Hope Gold Mine

Although some attractive assays have been obtained from the Fort Hope Gold Mine no reserve tonnage has been calculated. For the FHGM, records show that in 1959 previous workers removed a 3105kg bulk sample that averaged 3.54 oz/ton gold (Wallace, 1978). Grab samples ranging up to 9.37oz/ton gold were reported from trenches soon after the discovery in 1927 (Burwash, 1929). There are references by later authors to drilling of 15 holes on this vein in 1946 but no actual drilling records. One short hole by La Chib Mines Ltd. in 1980 which did not appear to penetrate projected Au bearing veins. An interesting intersection of 0.165 oz/t (5.66 g/t) over 0.5 m was made by La Chib Mines (1980) approximately 340 m due west and on strike (085°) with the FHGM shaft in hole FH-80-03. This hole was designed to test a conductor with an associated magnetic low. The La Chib gold occurs in mineralized volcanic wallrock as well as quartz veins. A small amount of drilling was completed in the wider area surrounding the FHGM sporadically in the period between 1980 and 1989 with relatively disappointing results.

ITEM 12: EXPLORATION

As of the writing of this report, and until such time that the property is transferred from Bard to Beatrix, Beatrix has not yet performed any exploration work of its own on the Opikeigen Property. The work performed by SLAM Exploration (who remains a 50% partner on the Property) is described in detail in Item 8: "Property History", along with a summary of all previous work

ITEM 13: DRILLING

As of the writing of this report, and until such time that the property is transferred from Bard to Beatrix, Beatrix has not yet performed any drilling of its own on the Opikeigen Property. The drilling carried out by SLAM Exploration (who remains a 50% partner on the Property) is described in detail in Item 8: "Property History".

ITEM 14: SAMPLING METHOD AND APPROACH

As of the writing of this report, and until such time that the property is transferred from Bard to Beatrix, Beatrix has not yet performed any sampling of its own on the Opikeigen Property. A description of SLAM's sampling method and approach is presented below (from Clarke, 2008).

The drill core was transported via helicopter in covered core trays from the drill site to a building on the west side of the airstrip in Fort Hope for logging and sampling. Drill core logging and sample mark-ups were handled by Bob Chataway & Jim Michaelis, who also directed and supervised the core splitting and sampling work.

Mineralized drill core sections, visibly altered sections and quartz veins were sampled and analyzed for gold. Weak and/or unmineralized sections adjacent to main mineralized zones were also sampled for gold. Sampled intervals ranged 0.30 to 1.5 meters in length, averaging about 1.0 meter in length.

Blind standard samples were inserted regularly to the sample stream for QA/QC over and above the regular controls carried out by the lab that included duplicates for every 10 samples. Weighted averages were calculated in the metric system (grams per tonne gold and metres) using uncut individual gold values. Results are in Appendix I.

ITEM 15: SAMPLE PREPARATION, ANALYSIS AND SECURITY

As mentioned above, drill core was transported via helicopter in covered core trays from the drill site to a secure building on the west side of the airstrip in Fort Hope for descriptive logging and sampling. Drill core logging and sample mark-ups were handled by Bob Chataway & Jim Michaelis who also directed and supervised the core splitting and sampling work.

A total of three hundred fifteen (315) split drill core samples were taken and shipped to Accurassay Laboratories in Thunder Bay. Accurassay Labs assays according to standard industry practices and is ISO 17025 registered. The samples were analysed for gold by fire assay with an AA finish.

ITEM 16: DATA VERIFICATION

The data presented in this Report has come primarily from numerous reports archived in the assessment files at the Ontario Ministry of Development and Mines Thunder Bay Resident Geologist's Office, and on the "Geology Ontario" website (www.geologyontario.mndm.gov.on.ca/). The authors have reviewed the historical data, and can verify that the information has been presented accurately as it exists in those files and reports to the best of their ability. Those reports, and the assessment files, contain the assay certificates and other supporting documentation for the data presented for the most recent work on the Property.

Bob Chataway (one of the authors of this report) worked on the property for the most recent drill program by SLAM in 2008, as well as numerous other programs on the Property, and can verify that the information from those programs is accurately presented.

The data from the historic Fort Hope Gold Mine workings was documented with some verification by Burwash (1929) and later government authors. The high grades reported from assessment files and government records are supported by grab sample results from the 2008 prospecting program.

ITEM 17: ADJACENT PROPERTIES

The Reserve Lake gold deposit is located within the Eabametoong First Nation reserve lands 15 km east of the Opikeigen Lake Property. Drilling by Little Long Lac Minerals and Zulapa Mines Ltd. resulted in a resource based upon “1041.4 tons per foot of depth grading 0.267 ounces gold per ton uncut and before dilution at roughly the 120’ level”. (Darling, 1962) The drilling results are not well documented. The above estimate was pre-43-101 and can only be verified by re-drilling the deposit.

The Miminiska Property owned by Landore Resource Canada Inc. is located 20 km west of the Opikeigen Property. According to Landore, “The mineralisation is hosted in iron formation in a similar setting to the Musselwhite gold deposit which has so far produced 1.4 million ounces with reserves currently estimated at over 2 million ounces.” Landore has completed four drilling campaigns on the Miminiska gold occurrence with 47 NQ diamond drill holes for 9,349 metres. According to the website www.landore.com the more significant drilling intervals include 40.2g/t gold over 2.4 metres; 9.7g/t gold over 4.3 metres; 9.8g/t gold over 2.2 metres; 9.8g/t gold over 3.5 metres; 132.1g/t gold over 0.5 metres.

The authors of this report have been unable to verify the above information, and the information is not necessarily indicative of the mineralization on the Opikeigen Property of Beatrix.

ITEM 18: MINERAL PROCESSING AND METALLURGICAL TESTING

There has been no mineral processing research or metallurgical testing done on the Opikeigen Project.

ITEM 19: MINERAL RESOURCE AND MINERAL RESERVE ESTIMATES

There are no Mineral Resource or Mineral Reserve estimates for the Opikeigen Project.

ITEM 20: OTHER RELEVANT DATA AND INFORMATION

The authors are unaware of any further data or relevant information that could be considered of any practical use in this report. The authors are not aware of any material fact or material change with respect to the subject matter of the Technical Report that is not reflected in the Technical Report, the omission to disclose which makes the Technical Report misleading.

ITEM 21: INTERPRETATION AND CONCLUSIONS

In the author's opinion the work performed on the property to date has been adequate in demonstrating the presence of significant gold mineralization on the property, but is not adequate in defining the length, width, depth or continuity of the mineralization.

The cluster of zones and occurrences within the Opikeigen Lake property, particularly the 2 km strike length between OL29 Zone and OL41 Extension 29, is indicative of the presence of a significant gold mineralized system. SLAM Exploration's understanding of the architecture of this system is evolving and is in process of developing a refined exploration strategy to further improve on the success ratio. The OL12 Zone is in the heart of this system. The system exhibits many proximal macro geological features that have been noted within Archean gold deposits worldwide that assist with the process of predictive mineral discovery:

- fold axial traces
- shear zones
- alteration zones
- feldspar porphyry and mafic dyke contacts
- magnetic lineaments
- stress induced structural features creating fluid conduits and depositional traps

At a more local level the following geological features add to the high probability of discovering more zones within the Opikeigen Lake Property in addition to successful delineation of zones discovered to date:

- The presence of a favourable host lithology with a favourable geometric setting allowing the formation of a funnel shaped array of lodes (zones), being the ideal geometry to form a large deposit at depth.
- The presence of early carbonate-quartz veins and breccias extending quite far outside the mineralization envelope.
- Abundance of pyrrhotite, which spatially correlates with E-W trending structures indicating an E-W control on the reduced fluid flow and setup for a redox domain front.
- Early fault jog, marked by a change in orientation of feldspar porphyry dykes, provides an important conduit for later mineralization bearing fluids mixing with the earlier reducing fluids.
- Strong magnetic response indicating presence of magnetite.
- Weak magnetic response coincides spatially with pyrrhotite (reduced) domain.
- Flanking of a weak gravity low to SE, interpreted to represent a felsic intrusion at depth.
- Indication of a vertical zonation of Au grade increasing with depth.

Recent Australian Archean Au research (Neumayr, P et al. 2004) has noted a clear spatial relationship suggesting that the redox domain boundary has a strong control on tonnage as well as the grade. The reduced domain is located outboard of the oxidized domain with the oxidized domain being focused and enveloping the deposits. The reduced fluid conduits and domains contain only low levels of gold, if any (< 1 g/t, mostly around 0.1 g/t). Only really high-grade intersections are strongly focused at the domain boundary, but lower grades are more dispersed from the domain boundary. Hole FH0801 appears to exhibit this pattern with the massive pyrrhotite (a reduced domain) containing only low levels of Au with the adjacent downhole silicified-pyrite-magnetic (redox boundary domain) carrying the Au.

The implication to this is that the sulphide-oxide mineralogy is an important mechanism to track the redox state of the hydrothermal fluid. Importantly, single minerals do not necessarily indicate a particular redox state and observation of assemblages is needed. For example, arsenopyrite and or pyrrhotite assemblages indicate reduced conditions and from reduced to oxidized conditions pyrrhotite-pyrite, magnetite-pyrite, hematite-pyrite assemblages are observed. Temperature and pressure sensitive pH and S gradients are seen as secondary mineralization controls. For exploration purposes, in order to focus future drill targets within the discovered mineralized zones it becomes important to collect data sets which allow mapping of flow pathways and the chemistry of the hydrothermal fluids and also determine the location of zones where fluid chemistry changed dramatically, i.e. the location of chemical gradients. The best data sets to track chemical domains and zones of drastic change in the fluid chemistry (gradients) are:

- Sulphide-oxide mineralogy
- Multi-element, whole-rock geochemistry (pathfinders As, Sb, Hg, Te Ag, and W)
- Magnetite chemistry

Although all these geological features are straight forward to read in the various data sets, it has to be understood that some of these features are more complex and need to be read more detailed to be useful for exploration. For example, the magnetite halo is readily detected using magnetic data sets either on a camp or drill core scale. However, there may be two or more generations of magnetite in the rock record.

The Australian research has also observed that magnetites which immediately predate gold are distinct in their chemical composition (e.g., high V/Al ratios, high Zn and Mn content). These form a disseminated halo around gold-bearing structures and are the best guide to gold mineralization, similar identification criteria have also been established in the whole-rock multi-element data sets. The SLAM Exploration drilling programs at the Reserve Creek Property to the east of the Opikeigen Lake Property distinctively show this type of disseminated magnetite halo around high grade gold mineralization.

ITEM 22: RECOMMENDATIONS

Exploration targeting and further delineation work on the discovered zones at the Opikeigen Property should selectively incorporate these into the program as exploration work in the area progresses:

- Further define local architecture (structural mapping, gravity, magnetic, compilation).
- Link architecture with litho chemistry (mineral mapping, selective multi-element, whole-rock geochemistry, magnetite chemistry).
- Identify and target structural traps which are located proximal to chemical redox domain boundaries indicating a strong chemical gradient.

The following work is recommended to further advance the Opikeigen Lake Property:

- Continued compilation of all historical work towards a comprehensive database for the Opikeigen Lake Property.
- Structures that appear to be oblique to the regional stratigraphy should be prioritized before other stratigraphic targets. Any geophysical anomalies generated by the deep penetrating airborne geophysical survey, completed by the OGS, should be mapped/prospected in the field.
- Selective trenching of known linear areas of deformation and sulphide mineralization would be a cost effective method of evaluating these trends, however this would take appropriate pre-planning to overcome the logistical hurdles and may not be possible over much of the property due to depth of overburden. An air photo interpretation of vegetation types may yield some information on where the overburden is thin.
- Future drilling is warranted at the OL12 Zone to further delineate this zone following a section reconstruction and analysis exercise. From what has been observed to date, the 2008 drilling at the LO12 Zone confirms that the zone grade increases with depth. A slightly steeper hole of similar orientation as FH0801 stepping to the west of OL8846 would be a logical next step.
- Future drilling is also warranted at the FHGM following a more detailed compilation and re-interpretation of FHGM historical work. The good intersection at the very top of FH0808 shows that there is some mineralized quartz vein continuity towards the west from the historic workings. Combining this with the projected 085° trend intercept to the west at the La Chib occurrence of similar grade would suggest that further

investigation via a series of short holes should be completed, especially as the Au mineralization at the FHGM is somewhat different and more likely to have a horizontal zonation with associated pinching and swelling than that seen at the northern zones which have a vertical gradient.

- Further delineation drilling on Zones 29 and 41 should follow an effort to further outline the OL12 Zone, using it as a guideline. In particular the OL41 Zone and the associated extension occurrence to the east is an attractive target for future delineation drilling. There is a high probability of along strike mineralized continuity between the OL41 Zone and its extension leading to one much larger zone.

Due to the uncertainty of being able to do any mechanical stripping/trenching, it is recommended that Beatrix's initial work on the project consist of a comprehensive compilation of all the previous work to produce a database to assist in identifying and prioritizing targets on the property, geochemical sampling and structural mapping. While this work will lead to new targets for drilling, or at least to modification of drill plans, it is the opinion of the authors that the existing drill targets on the property are "drill ready", and the known zones justify drilling in order to better define the zones, and to extend the zones along strike and at depth.

A budget of \$506,000 CDN is recommended to carry out the above work. It is the opinion of the authors that the property merits the described work program.

22.1 Proposed Budget

Compilation	
15 days @ \$600/day	9,000.00
Land Access	6,000.00
Structural Mapping/prospecting	
1 geologist for 30 days @ \$800/day	24,000.00
1 assistant for 30 days @ \$400/day	12,000.00
Geochemistry sampling and assays	30,000.00
Transportation (helicopter, airfare, mileage etc.).....	10,000.00
Lodging	5,000.00
Reports and Maps.....	10,000.00
Contingencies	<u>10,000.00</u>
SUB-TOTAL	\$116,000.00
Diamond Drilling	
1200 metres - \$300/metre (all inclusive)	360,000.00
Report and Maps	10,000.00
Contingencies	<u>20,000.00</u>
TOTAL.....	\$506,000.00

ITEM 23: REFERENCES

Note: Notations listed in the references below in the format “AFRI 52F05SW0031” refer to assessment files archived with the Ontario Ministry of Northern Development and Mines, Thunder Bay Resident Geologist’s Office, Thunder Bay, Ontario, and on the MNDM website (www.geologyontario.mndm.gov.on.ca/).

- Bowdidge, C.R.** (1979) Geological Report on the Fort Hope gold prospect, District of Kenora (Patricia Portion), Northwestern Ontario; Report for Spannex Resources Ltd. on behalf of La-Chib Mines Limited; Thunder Bay Region, 30p. AFRI 52P09SE0015
- Brown, P.A.R.** (1980) Report on Diamond Drilling, Fort Hope Area – Rich Lake for La Chib Mines Ltd. Thunder Bay Region, AFRI 52P09SE0014
- Burwash, E.M.** (1929) Geology of the Fort Hope Area; Ontario Dept. of Mines, Vol. 38, Part 2, pp1-28.
- Clarke, D.** (2008) Assessment Report on the 2007 and 2008 Diamond Drill Program, Opikeigen Property, in the Fort Hope Area, NW Ontario, Thunder Bay Mining District; for SLAM Exploration Ltd.
- Darling, G. B.** (1962) Summary Report, Lac-Reserve Prospect; Little Long Lac Gold Mines Limited, Fort Hope Area, AFRI 42M12SW006
- Eastwood, A. M.** (2001) “Assessment Report on the 2000 Diamond Drill Program, Opikeigen Lake Property” for Bard Ventures Ltd., April, 2001
- LeMaitre, R.** (1997) “Opikeigen Lake Project Assessment Report, 1997 Exploration Program”; by Bard Ventures Ltd., November 1997. AFRI 52P09SE2001
- Mason, J.K and White, G.D.** (1995) Mineral Occurrences and Prospects in the Fort Hope – Winisk Area; Ontario Geological Survey, Open File Report 5926, 225p.
- Neumayr, P., Walshe J.L., Hagemann S. (editors)** (2002-2004) Camp to Deposit Scale Alteration footprints in the Kalgoorlie-Kambalds Area. Predictive Mineral Discovery – Cooperative Research Centre - Project Y3 Final Report, www.pmdcrc.com.au/
- Pezzot E.T and Basil C.** (2003) “Logistical and Interpretive Geophysical Report on the Opikeigen Lake Property”, Bard Ventures Ltd. Ontario Ministry of Mines and Northern Affairs, AFRI 52P09SE2004

- Prest, V.K.** (1942) Geology of the Fort Hope Area; Ontario Dept. of Mines, Vol. 51, Part 3, 28p.
- Riley, R.A.** (1996) An Exploration Report on the "Fort Hope Mine" Property for Gerry O'Reilly; Thunder Bay, 35p. AFRI 52P09SE0004
- Stott, G. M. and Corfu, F.** (1991) Uchi Subprovince; *in* Geology of Ontario, Ontario Geological Survey, Special Volume 4, Part I, p.145-236
- Taylor, M.** (1989) "Opikeigen Lake Project Final Report -1988 Exploration Program"; Noramco Exploration Inc.
- Taylor, M.R.** (2002) Report on the Fort Hope Claim, Opikeigen Lake Project, Bard Ventures Ltd. AFRI 52P09SE2003
- Thurston, P.C. and Carter, M.W.** (1970) Operation Fort Hope; Ontario Department of Mines and Northern Affairs; M.P. 42, 64p.
- Vickers, A.** (1999) "Logistical and Interpretive Geophysical Report on the Opikeigen Lake Property", Bard Ventures Ltd. Ontario Ministry of Mines and Northern Affairs, Assessment Files, Sudbury, Ontario.
- Wallace, H.** (1978) "Geology of the Opikeigen Lake Area"; Ontario Geological Survey, Report 185, pp. 58

ITEM 24: DATE AND SIGNATURE PAGE

This report titled “Technical Report on the Opikeigen Project, Thunder Bay Mining Division, Northwestern Ontario”, and dated December 3, 2009 was prepared and signed by the following authors:

Dated at Thunder Bay, Ontario
December 3rd, 2009

“Desmond Cullen”

“Robert T. Chataway”

Desmond Cullen, P.Geol.

Robert T. Chataway, P.Geol.

ITEM 25: CERTIFICATE OF QUALIFICATIONS

Desmond Cullen
R.R. #2
Kaministiquia, Ontario
Canada, P0T 1X0
Telephone: 807-933-4689, Fax: 807-622-4156
Email: des.cullen@sympatico.ca

CERTIFICATE OF QUALIFIED PERSON

I, Desmond Cullen, P.Geo. (#0164), do hereby certify that:

1. I am a consulting geologist with Clark Exploration of Thunder Bay, Ontario
2. I graduated with the degree of Honours Bachelor of Science (Geology) from Lakehead University, Thunder Bay, in 1988
3. "Technical Report" refers to the report titled "Technical Report on the Opikeigen Project, Thunder Bay Mining Division, Northwestern Ontario", and dated December 3, 2007.
4. I am a registered Professional Geoscientist with the Association of Professional Geoscientists of Ontario (#0164) and a member Ontario Prospectors Association.
5. I have worked as a Geologist for 21 years since my graduation from university.
6. I have read the definition of "qualified person" set out in National Instrument 43-101 ("NI 43-101") and certify that by reason of my education, affiliation with a professional association (as defined in NI 43-101) and past relevant work experience, I fulfill the requirements as a Qualified Person for the purposes of NI 43-101.
7. I have not visited the Opikeigen Property.
8. I am responsible for the preparation of the entire Technical Report.
9. I am independent of the party or parties (the "issuer") involved in the transaction for which the Technical Report is required, other than providing consulting services, and in the application of all of the tests in section 1.4 of NI 43-101.
10. I have had no prior involvement with the mineral Property that forms the subject of this Technical Report.
11. I have read NI-43-101 and Form 43-101F1, and the Technical Report has been prepared in compliance with that Instrument and Form.

12. As of the date of this certificate, and to the best of my knowledge, information and belief, the Technical Report contains all scientific and technical information that is required to be disclosed to make the Technical Report not misleading.

Dated this 3rd Day December, 2009.

SIGNED and SEALED

“Desmond Cullen”

Desmond Cullen, P.Geol.

R. T. Chataway, P.Geo.
139 Peter Street
Thunder Bay, Ontario P7A 5H6
Telephone (807) 344-8151
Email: chataway@tbaytel.net

CERTIFICATE OF QUALIFIED PERSON

I, Robert T. Chataway, P.Geo. (#1696), do hereby certify that:

1. I am a consulting geologist working as a sole proprietor from Thunder Bay, Ontario
2. I graduated with the degree of Bachelor of Science degree from University of B.C. in 1970 in Geology.
3. "Technical Report" refers to the report titled "Technical Report on the Opikeigen Project, Thunder Bay Mining Division, Northwestern Ontario", and dated December 3, 2009.
4. I am a registered Professional Geoscientist with the Association of Professional Geoscientists of Ontario (#1696) and a member Ontario Prospectors Association.
5. I have worked as a Geologist for 39 years since my graduation from university.
6. I have read the definition of "qualified person" set out in National Instrument 43-101 ("NI 43-101") and certify that by reason of my education, affiliation with a professional association (as defined in NI 43-101) and past relevant work experience, I fulfill the requirements as a Qualified Person for the purposes of NI 43-101.
7. I was the Project Manager on the most recent exploration program in 2008 on the Opikeigen Project (the "Property") and was involved in all the exploration programs since 2000 as project geologist.
8. I am responsible for the preparation of the entire Technical Report.
9. I am independent of the party or parties (the "issuer") involved in the transaction for which the Technical Report is required, other than providing consulting services, and in the application of all of the tests in section 1.4 of NI 43-101.
10. I have worked on the mineral Property that forms the subject of this Technical Report on several of the exploration programs described herein.
11. I have read NI-43-101 and Form 43-101F1, and the Technical Report has been prepared in compliance with that Instrument and Form.
12. As of the date of this certificate, and to the best of my knowledge, information and belief, the Technical Report contains all scientific and technical information that is required to be disclosed to make the Technical Report not misleading.

Dated this 3rd Day of December, 2009.

SIGNED and SEALED

“Robert T. Chataway”

Robert T. Chataway, P.Geo.

Appendix I – Assay Results from Opikeigen 2008 Drilling

Opikeigan Lake 2008 Assay Sheet								Au ppb	Au oz/t	Au g/t
Hole ID	Sample	From	To	Interval	Type	Acc #	Client ID	5 DL	0.001 DL	0.005 DL
FH0801	423205	135.77	136.27	0.50	Assay	103273	423205	8	<0.001	0.008
FH0801	423206	136.27	136.57	0.30	Assay	103274	423206	20	<0.001	0.02
FH0801	423207	136.57	137.07	0.50	Assay	103275	423207	6	<0.001	0.006
FH0801	423208	141.46	142.46	1.00	Assay	103276	423208	7	<0.001	0.007
FH0801	423209	142.46	143.46	1.00	Assay	103277	423209	30	<0.001	0.03
	423210	Standard Au Q1			Assay	103278	423210	1225	0.036	1.225
FH0801	423211	143.46	144.46	1.00	Assay	103279	423211	22	<0.001	0.022
FH0801	423211	143.46	144.46	1.00	Assay	103280	423211	39	0.001	0.039
FH0801	423212	144.46	145.46	1.00	Assay	103281	423212	41	0.001	0.041
FH0801	423213	145.46	146.46	1.00	Assay	103282	423213	56	0.002	0.056
FH0801	423214	146.46	147.47	1.01	Assay	103283	423214	8	<0.001	0.008
FH0801	423215	147.47	148.46	0.99	Assay	103284	423215	25	<0.001	0.025
FH0801	423216	148.46	149.46	1.00	Assay	103285	423216	29	<0.001	0.029
FH0801	423217	149.46	150.46	1.00	Assay	103286	423217	39	0.001	0.039
FH0801	423218	150.46	151.46	1.00	Assay	103287	423218	25	<0.001	0.025
FH0801	423219	151.46	152.46	1.00	Assay	103288	423219	105	0.003	0.105
	423220	Standard Au Q1			Assay	103289	423220	1179	0.034	1.179
FH0801	423221	152.46	153.46	1.00	Assay	103290	423221	82	0.002	0.082
FH0801	423221	152.46	153.46	1.00	Assay	103291	423221	78	0.002	0.078
FH0801	423222	154.95	155.95	1.00	Assay	103292	423222	240	0.007	0.24
FH0801	423223	155.95	156.95	1.00	Assay	103293	423223	1082	0.032	1.082
FH0801	423224	156.95	157.95	1.00	Assay	103294	423224	372	0.011	0.372
FH0801	423225	157.95	158.95	1.00	Assay	103295	423225	949	0.028	0.949
FH0801	423226	158.95	159.95	1.00	Assay	103296	423226	224	0.007	0.224
FH0801	423227	159.95	160.95	1.00	Assay	103297	423227	1303	0.038	1.303
FH0801	423228	160.95	161.45	0.50	Assay	103298	423228	16	<0.001	0.016
FH0801	423229	171.68	172.18	0.50	Assay	103299	423229	26	<0.001	0.026
FH0801	423230	153.46	154.95	1.49	Assay	103300	423230	51	0.002	0.051
FH0801	423231	176.78	178.30	1.52	Assay	103301	423231	18	<0.001	0.018
FH0801	423231	176.78	178.30	1.52	Assay	103302	423231	18	<0.001	0.018
FH0801	423232	178.30	179.83	1.53	Assay	103303	423232	13	<0.001	0.013
FH0801	423233	179.83	181.30	1.47	Assay	103304	423233	23	<0.001	0.023
FH0801	423234	181.30	182.88	1.58	Assay	103305	423234	288	0.008	0.288
FH0801	423235	182.88	184.40	1.52	Assay	103306	423235	16	<0.001	0.016
FH0801	423236	184.40	185.93	1.53	Assay	103307	423236	8	<0.001	0.008
FH0803	423237	15.24	16.00	0.76	Assay	103308	423237	24	<0.001	0.024
FH0803	423238	16.00	16.65	0.65	Assay	103309	423238	7	<0.001	0.007
FH0803	423239	16.65	17.40	0.75	Assay	103310	423239	1301	0.038	1.301
	423240	Standard Au Q1			Assay	103311	423240	1225	0.036	1.225
FH0803	423241	17.40	18.30	0.90	Assay	103312	423241	21	<0.001	0.021
FH0803	423241	17.40	18.30	0.90	Assay	103313	423241	28	<0.001	0.028
FH0803	423242	29.80	30.70	0.90	Assay	103314	423242	7	<0.001	0.007
FH0803	423243	30.70	31.10	0.40	Assay	103315	423243	56	0.002	0.056
FH0803	423244	31.10	31.60	0.50	Assay	103316	423244	112	0.003	0.112
FH0803	423245	31.60	32.10	0.50	Assay	103317	423245	28	<0.001	0.028
FH0803	423246	43.65	44.45	0.80	Assay	103318	423246	11	<0.001	0.011
FH0803	423247	44.45	44.75	0.30	Assay	103319	423247	8	<0.001	0.008
FH0803	423248	44.75	45.65	0.90	Assay	103320	423248	11	<0.001	0.011
FH0803	423249	48.10	48.74	0.64	Assay	103321	423249	18	<0.001	0.018
FH0803	423250	48.74	49.24	0.50	Assay	103322	423250	1197	0.035	1.197
FH0803	423251	49.24	50.28	1.04	Assay	103323	423251	16	<0.001	0.016
FH0803	423251	49.24	50.28	1.04	Assay	103324	423251	12	<0.001	0.012

Opikeigan Lake 2008 Assay Sheet								Au ppb	Au oz/t	Au g/t
Hole ID	Sample	From	To	Interval	Type	Acc #	Client ID	5 DL	0.001 DL	0.005 DL
FH0803	423252	54.71	55.41	0.70	Assay	104514	423252	24	<0.001	0.024
FH0803	423253	55.41	55.81	0.40	Assay	104515	423253	6	<0.001	0.006
FH0803	423254	55.81	56.71	0.90	Assay	104516	423254	14	<0.001	0.014
FH0803	423255	59.42	60.03	0.61	Assay	104517	423255	7	<0.001	0.007
FH0803	423256	60.03	60.62	0.59	Assay	104518	423256	17	<0.001	0.017
FH0803	423257	60.62	61.42	0.80	Assay	104519	423257	7	<0.001	0.007
FH0803	423258	84.09	84.89	0.80	Assay	104520	423258	6	<0.001	0.006
FH0803	423259	84.89	85.39	0.50	Assay	104521	423259	<5	<0.001	<0.005
	423260	Standard Au Q1			Assay	104522	423260	1140	0.033	1.14
FH0803	423261	85.39	85.89	0.50	Assay	104523	423261	5	<0.001	0.005
FH0803	423261	85.39	85.89	0.50	Assay	104524	423261	5	<0.001	0.005
FH0803	423262	85.89	86.39	0.50	Assay	104525	423262	12	<0.001	0.012
FH0803	423263	86.39	86.89	0.50	Assay	104526	423263	<5	<0.001	<0.005
FH0803	423264	86.89	87.69	0.80	Assay	104527	423264	11	<0.001	0.011
FH0803	423265	87.69	88.41	0.72	Assay	104528	423265	10	<0.001	0.01
FH0803	423266	91.90	92.70	0.80	Assay	104529	423266	<5	<0.001	<0.005
FH0803	423267	92.70	93.10	0.40	Assay	104530	423267	<5	<0.001	<0.005
FH0803	423268	93.10	93.90	0.80	Assay	104531	423268	<5	<0.001	<0.005
FH0804	423269	14.10	15.24	1.14	Assay	104532	423269	7	<0.001	0.007
FH0804	423270	15.24	15.89	0.65	Assay	104533	423270	<5	<0.001	<0.005
FH0804	423271	15.89	16.68	0.79	Assay	104534	423271	<5	<0.001	<0.005
FH0804	423271	15.89	16.68	0.79	Assay	104535	423271	<5	<0.001	<0.005
FH0804	423272	16.68	17.34	0.66	Assay	104536	423272	<5	<0.001	<0.005
FH0804	423273	17.34	17.78	0.44	Assay	104537	423273	<5	<0.001	<0.005
FH0804	423274	17.78	18.68	0.90	Assay	104538	423274	11	<0.001	0.011
FH0804	423275	18.68	19.38	0.70	Assay	104539	423275	6	<0.001	0.006
FH0804	423276	20.88	21.88	1.00	Assay	104540	423276	9	<0.001	0.009
FH0804	423277	21.88	22.88	1.00	Assay	104541	423277	63	0.002	0.063
FH0804	423278	27.43	28.23	0.80	Assay	104542	423278	11	<0.001	0.011
FH0804	423279	28.23	28.68	0.45	Assay	104543	423279	20	<0.001	0.02
	423280	Standard Au Q1			Assay	104544	423280	1131	0.033	1.131
FH0804	423281	28.68	29.13	0.45	Assay	104545	423281	76	0.002	0.076
FH0804	423281	28.68	29.13	0.45	Assay	104546	423281	84	0.002	0.084
FH0804	423282	29.13	29.98	0.85	Assay	104547	423282	77	0.002	0.077
FH0804	423283	35.30	35.80	0.50	Assay	104548	423283	16	<0.001	0.016
FH0804	423284	35.80	36.25	0.45	Assay	104549	423284	6	<0.001	0.006
FH0804	423285	36.25	37.00	0.75	Assay	104550	423285	19	<0.001	0.019
FH0804	423286	37.00	37.80	0.80	Assay	104551	423286	14	<0.001	0.014
FH0804	423287	37.80	38.60	0.80	Assay	104552	423287	10	<0.001	0.01
FH0804	423288	41.97	43.17	1.20	Assay	104553	423288	19	<0.001	0.019
FH0804	423289	43.17	44.32	1.15	Assay	104554	423289	7	<0.001	0.007
FH0804	423290	44.32	44.72	0.40	Assay	104555	423290	8	<0.001	0.008
FH0804	423291	44.72	45.72	1.00	Assay	104556	423291	16	<0.001	0.016
FH0804	423291	44.72	45.72	1.00	Assay	104557	423291	19	<0.001	0.019
FH0804	423292	45.72	46.52	0.80	Assay	104558	423292	14	<0.001	0.014
FH0804	423293	48.66	49.06	0.40	Assay	104559	423293	19	<0.001	0.019
FH0804	423294	49.06	49.80	0.74	Assay	104560	423294	22	<0.001	0.022
FH0804	423295	49.80	50.20	0.40	Assay	104561	423295	17	<0.001	0.017
FH0804	423296	50.20	51.00	0.80	Assay	104562	423296	10	<0.001	0.01
FH0804	423297	51.44	52.22	0.78	Assay	104563	423297	9	<0.001	0.009
FH0804	423298	52.22	52.62	0.40	Assay	104564	423298	31	<0.001	0.031
FH0804	423299	52.62	53.66	1.04	Assay	104565	423299	11	<0.001	0.011

Opikeigan Lake 2008 Assay Sheet								Au ppb	Au oz/t	Au g/t
Hole ID	Sample	From	To	Interval	Type	Acc #	Client ID	5 DL	0.001 DL	0.005 DL
	423300	Standard Au Q1			Assay	104566	423300	1299	0.038	1.299
FH0804	423301	53.66	54.46	0.80	Assay	104567	423301	15	<0.001	0.015
FH0804	423301	53.66	54.46	0.80	Assay	104568	423301	10	<0.001	0.01
FH0804	423302	54.46	54.86	0.40	Assay	104569	423302	18	<0.001	0.018
FH0804	423303	54.86	55.06	0.20	Assay	104570	423303	<5	<0.001	<0.005
FH0804	423304	55.06	55.66	0.60	Assay	104571	423304	11	<0.001	0.011
FH0804	423305	55.66	57.26	1.60	Assay	104572	423305	8	<0.001	0.008
FH0804	423306	60.35	61.35	1.00	Assay	104573	423306	19	<0.001	0.019
FH0804	423307	61.35	61.75	0.40	Assay	104574	423307	26	<0.001	0.026
FH0804	423308	61.75	62.15	0.40	Assay	104575	423308	21	<0.001	0.021
FH0804	423309	62.15	63.00	0.85	Assay	104576	423309	61	0.002	0.061
FH0804	423310	63.00	63.80	0.80	Assay	104577	423310	19	<0.001	0.019
FH0804	423311	63.80	64.20	0.40	Assay	104578	423311	17	<0.001	0.017
FH0804	423311	63.80	64.20	0.40	Assay	104579	423311	15	<0.001	0.015
FH0804	423312	64.20	64.70	0.50	Assay	104580	423312	12	<0.001	0.012
FH0804	423313	64.70	65.50	0.80	Assay	104581	423313	25	<0.001	0.025
FH0804	423314	66.90	67.74	0.84	Assay	104582	423314	11	<0.001	0.011
FH0804	423315	67.74	68.24	0.50	Assay	104583	423315	12	<0.001	0.012
FH0804	423316	68.24	69.04	0.80	Assay	104584	423316	13	<0.001	0.013
FH0804	423317	69.04	69.54	0.50	Assay	104585	423317	25	<0.001	0.025
FH0804	423318	69.54	70.10	0.56	Assay	104586	423318	11	<0.001	0.011
FH0802	423319	52.01	52.76	0.75	Assay	104587	423319	7	<0.001	0.007
	423320	Standard Au Q1			Assay	104588	423320	1489	0.043	1.489
FH0802	423321	52.76	53.26	0.50	Assay	104589	423321	21	<0.001	0.021
FH0802	423322	53.26	54.01	0.75	Assay	107745	423322	12	<0.001	0.012
FH0802	423323	64.80	65.40	0.60	Assay	107746	423323	10	<0.001	0.01
FH0802	423324	65.40	65.80	0.40	Assay	107747	423324	104	0.003	0.104
FH0802	423325	65.80	66.60	0.80	Assay	107748	423325	11	<0.001	0.011
FH0802	423326	67.42	68.17	0.75	Assay	107749	423326	15	<0.001	0.015
FH0802	423327	68.17	68.67	0.50	Assay	107750	423327	19	<0.001	0.019
FH0802	423328	68.67	69.42	0.75	Assay	107751	423328	15	<0.001	0.015
FH0802	423329	73.82	74.62	0.80	Assay	107752	423329	13	<0.001	0.013
FH0802	423330	74.62	75.02	0.40	Assay	107753	423330	<5	<0.001	<0.005
FH0802	423330	74.62	75.02	0.40	Assay	107754	423330	<5	<0.001	<0.005
FH0802	423331	75.02	75.82	0.80	Assay	107755	423331	12	<0.001	0.012
FH0802	423332	75.82	76.82	1.00	Assay	107756	423332	6	<0.001	0.006
FH0802	423333	82.90	83.90	1.00	Assay	107757	423333	<5	<0.001	<0.005
FH0802	423334	83.90	84.55	0.65	Assay	107758	423334	<5	<0.001	<0.005
FH0802	423335	84.55	85.15	0.60	Assay	107759	423335	<5	<0.001	<0.005
FH0802	423336	85.15	86.15	1.00	Assay	107760	423336	8	<0.001	0.008
FH0802	423337	86.15	87.15	1.00	Assay	107761	423337	6	<0.001	0.006
FH0802	423338	87.15	88.05	0.90	Assay	107762	423338	<5	<0.001	<0.005
FH0802	423339	88.05	89.55	1.50	Assay	107763	423339	<5	<0.001	<0.005
	423340	Standard Au Q1			Assay	107764	423340	1212	0.035	1.212
FH0802	423341	94.65	95.45	0.80	Assay	107765	423341	8	<0.001	0.008
FH0802	423341	94.65	95.45	0.80	Assay	107766	423341	<5	<0.001	<0.005
FH0802	423342	95.45	96.25	0.80	Assay	107767	423342	7	<0.001	0.007
FH0802	423343	96.25	97.05	0.80	Assay	107768	423343	15	<0.001	0.015
FH0802	423344	97.05	97.85	0.80	Assay	107769	423344	7	<0.001	0.007
FH0802	423345	97.85	98.65	0.80	Assay	107770	423345	11	<0.001	0.011
FH0802	423346	100.98	102.18	1.20	Assay	107771	423346	9	<0.001	0.009
FH0802	423347	102.18	102.68	0.50	Assay	107772	423347	<5	<0.001	<0.005

Opikeigan Lake 2008 Assay Sheet								Au ppb	Au oz/t	Au g/t
Hole ID	Sample	From	To	Interval	Type	Acc #	Client ID	5 DL	0.001 DL	0.005 DL
FH0802	423348	102.68	104.18	1.50	Assay	107773	423348	<5	<0.001	<0.005
FH0802	423349	104.18	105.18	1.00	Assay	107774	423349	13	<0.001	0.013
FH0802	423350	105.18	105.58	0.40	Assay	107775	423350	9	<0.001	0.009
FH0802	423350	105.18	105.58	0.40	Assay	107776	423350	<5	<0.001	<0.005
FH0802	423351	105.58	106.38	0.80	Assay	107777	423351	9	<0.001	0.009
FH0802	423352	106.38	107.88	1.50	Assay	107778	423352	10	<0.001	0.01
FH0802	423353	107.88	109.25	1.37	Assay	107779	423353	27	<0.001	0.027
FH0802	423354	109.25	110.27	1.02	Assay	107780	423354	10	<0.001	0.01
FH0802	423355	110.27	110.97	0.70	Assay	107781	423355	6	<0.001	0.006
FH0802	423356	110.97	111.47	0.50	Assay	107782	423356	5	<0.001	0.005
FH0802	423357	111.47	112.27	0.80	Assay	107783	423357	<5	<0.001	<0.005
FH0802	423358	113.20	114.00	0.80	Assay	107784	423358	7	<0.001	0.007
FH0802	423359	114.00	114.50	0.50	Assay	107785	423359	6	<0.001	0.006
	423360	Standard Au Q1			Assay	107786	423360	1191	0.035	1.191
FH0802	423361	114.50	115.50	1.00	Assay	107787	423361	14	<0.001	0.014
FH0802	423361	114.50	115.50	1.00	Assay	107788	423361	12	<0.001	0.012
FH0802	423362	117.83	119.03	1.20	Assay	107789	423362	18	<0.001	0.018
FH0802	423363	119.03	119.83	0.80	Assay	107790	423363	26	<0.001	0.026
FH0802	423364	119.83	120.23	0.40	Assay	107791	423364	90	0.003	0.09
FH0802	423365	120.23	121.23	1.00	Assay	107792	423365	14	<0.001	0.014
FH0802	423366	126.29	127.79	1.50	Assay	107793	423366	18	<0.001	0.018
FH0802	423367	130.30	131.80	1.50	Assay	107794	423367	13	<0.001	0.013
FH0802	423368	131.80	132.80	1.00	Assay	107795	423368	8	<0.001	0.008
FH0802	423369	132.80	133.30	0.50	Assay	107796	423369	6	<0.001	0.006
FH0802	423370	133.30	134.50	1.20	Assay	107797	423370	<5	<0.001	<0.005
FH0802	423370	133.30	134.50	1.20	Assay	107798	423370	8	<0.001	0.008
FH0802	423371	134.50	136.00	1.50	Assay	107799	423371	7	<0.001	0.007
FH0802	423372	136.00	136.60	0.60	Assay	107800	423372	6	<0.001	0.006
FH0802	423373	136.60	137.16	0.56	Assay	107801	423373	83	0.002	0.083
FH0802	423374	137.16	137.89	0.73	Assay	107802	423374	34	<0.001	0.034
FH0802	423375	137.89	138.39	0.50	Assay	107803	423375	55	0.002	0.055
FH0802	423376	138.39	139.97	1.58	Assay	107804	423376	<5	<0.001	<0.005
FH0802	423377	139.97	141.46	1.49	Assay	107805	423377	<5	<0.001	<0.005
FH0802	423378	141.46	142.99	1.53	Assay	107806	423378	26	<0.001	0.026
FH0802	423379	142.99	143.99	1.00	Assay	107807	423379	7	<0.001	0.007
	423380	Standard Au Q1			Assay	107808	423380	1402	0.041	1.402
	423380	Standard Au Q1			Insufficient Sa	107809	423380			
FH0802	423381	145.00	146.36	1.36	Assay	107810	423381	20	<0.001	0.02
FH0802	423382	146.36	146.86	0.50	Assay	113724	423382	20	<0.001	0.02
FH0802	423383	146.86	148.36	1.50	Assay	113725	423383	18	<0.001	0.018
FH0802	423384	148.36	149.36	1.00	Assay	113726	423384	<5	<0.001	<0.005
FH0802	423385	149.36	150.29	0.93	Assay	113727	423385	12	<0.001	0.012
FH0802	423386	151.76	152.56	0.80	Assay	113728	423386	13	<0.001	0.013
FH0802	423387	152.56	153.16	0.60	Assay	113729	423387	24	<0.001	0.024
FH0802	423388	153.16	154.48	1.32	Assay	113730	423388	10	<0.001	0.01
FH0802	423389	154.48	155.53	1.05	Assay	113731	423389	159	0.005	0.159
FH0802	423390	155.53	156.90	1.37	Assay	113732	423390	6	<0.001	0.006
FH0802	423391	156.90	157.30	0.40	Assay	113733	423391	49	0.001	0.049
FH0802	423391	156.90	157.30	0.40	Assay	113734	423391	33	<0.001	0.033
FH0802	423392	157.30	158.50	1.20	Assay	113735	423392	7	<0.001	0.007
FH0802	423393	158.50	159.00	0.50	Assay	113736	423393	10	<0.001	0.01
FH0802	423394	159.00	160.20	1.20	Assay	113737	423394	5	<0.001	0.005

Opikeigan Lake 2008 Assay Sheet								Au ppb	Au oz/t	Au g/t
Hole ID	Sample	From	To	Interval	Type	Acc #	Client ID	5 DL	0.001 DL	0.005 DL
FH0802	423395	160.20	161.54	1.34	Assay	113738	423395	12	<0.001	0.012
FH0802	423396	161.54	162.10	0.56	Assay	113739	423396	9	<0.001	0.009
FH0802	423397	167.80	169.19	1.39	Assay	113740	423397	11	<0.001	0.011
FH0802	423398	169.19	170.69	1.50	Assay	113741	423398	142	0.004	0.142
FH0802	423399	170.69	171.09	0.40	Assay	113742	423399	185	0.005	0.185
	423400	Standard Au Q1			Assay	113743	423400	1539	0.045	1.539
FH0802	423401	171.09	172.59	1.50	Assay	113744	423401	12	<0.001	0.012
FH0802	423401	171.09	172.59	1.50	Assay	113745	423401	<5	<0.001	<0.005
FH0802	423402	172.59	174.09	1.50	Assay	113746	423402	73	0.002	0.073
FH0802	423403	181.64	182.14	0.50	Assay	113747	423403	<5	<0.001	<0.005
FH0802	423404	182.14	183.24	1.10	Assay	113748	423404	13	<0.001	0.013
FH0802	423405	183.24	183.74	0.50	Assay	113749	423405	35	0.001	0.035
FH0802	423406	183.74	184.44	0.70	Assay	113750	423406	11	<0.001	0.011
FH0802	423407	184.44	185.55	1.11	Assay	113751	423407	15	<0.001	0.015
FH0802	423408	185.55	186.05	0.50	Assay	113752	423408	672	0.02	0.672
FH0802	423409	186.05	187.18	1.13	Assay	113753	423409	50	0.001	0.05
FH0802	423410	187.18	187.98	0.80	Assay	113754	423410	15	<0.001	0.015
FH0802	423411	187.98	188.48	0.50	Assay	113755	423411	1569	0.046	1.569
FH0802	423411	187.98	188.48	0.50	Assay	113756	423411	1268	0.037	1.268
FH0802	423412	188.48	188.98	0.50	Assay	113757	423412	23	<0.001	0.023
FH0802	423413	188.98	189.78	0.80	Assay	113758	423413	62	0.002	0.062
FH0805	423414	3.50	4.70	1.20	Assay	113759	423414	11	<0.001	0.011
FH0805	423415	4.70	5.50	0.80	Assay	113760	423415	34	<0.001	0.034
FH0805	423416	5.50	7.00	1.50	Assay	113761	423416	12	<0.001	0.012
FH0805	423417	7.00	7.50	0.50	Assay	113762	423417	<5	<0.001	<0.005
FH0805	423418	7.50	8.00	0.50	Assay	113763	423418	14	<0.001	0.014
FH0805	423419	8.00	9.10	1.10	Assay	113764	423419	7	<0.001	0.007
	423420	Standard Au Q3			Assay	113765	423420	400	0.012	0.4
	423420	Standard Au Q3			Assay	113766	423421	12	<0.001	0.012
FH0805	423421	16.08	16.58	0.50	Assay	113767	423421	13	<0.001	0.013
FH0805	423422	16.58	17.58	1.00	Assay	113768	423422	7	<0.001	0.007
FH0805	423423	17.58	19.06	1.48	Assay	113769	423423	7	<0.001	0.007
FH0805	423424	19.06	19.56	0.50	Assay	113770	423424	9	<0.001	0.009
FH0805	423425	23.55	24.65	1.10	Assay	113771	423425	9	<0.001	0.009
FH0805	423426	24.65	25.15	0.50	Assay	113772	423426	11	<0.001	0.011
FH0806	423427	7.96	8.96	1.00	Assay	113773	423427	17	<0.001	0.017
FH0806	423428	8.96	9.48	0.52	Assay	113774	423428	13	<0.001	0.013
FH0806	423429	20.16	21.66	1.50	Assay	113775	423429	32	<0.001	0.032
FH0806	423430	28.18	28.98	0.80	Assay	113776	423430	<5	<0.001	<0.005
FH0806	423431	28.98	29.48	0.50	Assay	113777	423431	<5	<0.001	<0.005
FH0806	423431	28.98	29.48	0.50	Assay	113778	423431	13	<0.001	0.013
FH0806	423432	29.48	30.48	1.00	Assay	113779	423432	9	<0.001	0.009
FH0806	423433	30.48	32.18	1.70	Assay	113780	423433	7	<0.001	0.007
FH0806	423434	33.96	34.46	0.50	Assay	113781	423434	12	<0.001	0.012
FH0806	423435	34.46	34.96	0.50	Assay	113782	423435	14	<0.001	0.014
FH0806	423436	43.60	44.80	1.20	Assay	113783	423436	<5	<0.001	<0.005
FH0806	423437	44.80	45.40	0.60	Assay	113784	423437	57	0.002	0.057
FH0806	423438	45.40	46.40	1.00	Assay	113785	423438	141	0.004	0.141
FH0806	423439	46.40	47.90	1.50	Assay	113786	423439	63	0.002	0.063
	423440	Standard Au Q3			Assay	113787	423440	364	0.011	0.364
	423440	Standard Au Q3			Assay	113788	423441	<5	<0.001	<0.005
FH0806	423441	52.76	53.26	0.50	Assay	113789	423441	<5	<0.001	<0.005

Opikeigan Lake 2008 Assay Sheet								Au ppb	Au oz/t	Au g/t	
Hole ID	Sample	From	To	Interval	Type	Acc #	Client ID	5 DL	0.001 DL	0.005 DL	
FH0806	423442	53.26	54.76	1.50	Assay	113790	423442	29	<0.001	0.029	
FH0806	423443	54.76	55.26	0.50	Assay	113791	423443	19	<0.001	0.019	
FH0806	423444	63.51	64.01	0.50	Assay	113792	423444	598	0.017	0.598	
FH0806	423445	64.01	65.06	1.05	Assay	113793	423445	28	<0.001	0.028	
FH0806	423446	65.06	66.11	1.05	Assay	113794	423446	<5	<0.001	<0.005	
FH0806	423447	66.11	66.61	0.50	Assay	113795	423447	10	<0.001	0.01	
FH0806	423448	84.50	86.00	1.50	Assay	113796	423448	101	0.003	0.101	
FH0806	423449	86.00	87.50	1.50	Assay	113797	423449	182	0.005	0.182	
FH0806	423450	87.50	89.00	1.50	Assay	113798	423450	38	0.001	0.038	
FH0806	423451	89.00	90.50	1.50	Assay	113799	423451	63	0.002	0.063	
FH0806	423451	89.00	90.50	1.50	Assay	113800	423451	68	0.002	0.068	
FH0806	423452	90.50	92.00	1.50	Assay	113801	423452	14	<0.001	0.014	
FH0806	423453	92.00	93.50	1.50	Assay	113802	423453	33	<0.001	0.033	
	423454	Missing tags in sample book 423454 - 423457									
	423455										
	423456										
	423457										
FH0806	423458	93.50	94.20	0.70	Assay	113803	423458	59	0.002	0.059	
FH0806	423459	94.20	94.83	0.63	Assay	113804	423459	179	0.005	0.179	
	423460	Standard Au Q3				Assay	113805	423460	365	0.011	0.365
FH0806	423461	94.83	96.24	1.41	Assay	113806	423461	48	0.001	0.048	
FH0806	423462	96.24	96.64	0.40	Assay	113807	423462	57	0.002	0.057	
FH0806	423463	96.64	97.04	0.40	Assay	113808	423463	133	0.004	0.133	
FH0806	423464	97.04	98.09	1.05	Assay	113809	423464	32	<0.001	0.032	
FH0806	423465	98.09	98.59	0.50	Assay	113810	423465	21	<0.001	0.021	
FH0806	423465	98.09	98.59	0.50	Assay	113811	423465	<5	<0.001	<0.005	
FH0806	423466	98.59	99.39	0.80	Assay	113812	423466	5	<0.001	0.005	
FH0807	423467	6.97	7.37	0.40	Assay	113813	423467	47	0.001	0.047	
FH0807	423468	7.37	8.17	0.80	Assay	115978	423468	833	0.024	0.833	
FH0807	423469	16.26	17.36	1.10	Assay	115979	423469	19	<0.001	0.019	
FH0807	423470	44.90	45.50	0.60	Assay	115980	423470	17	<0.001	0.017	
FH0807	423471	45.50	46.18	0.68	Assay	115981	423471	18	<0.001	0.018	
FH0807	423472	48.27	48.77	0.50	Assay	115982	423472	17	<0.001	0.017	
FH0807A	423473	6.10	7.45	1.35	Assay	115983	423473	33	<0.001	0.033	
FH0807A	423474	7.45	7.95	0.50	Assay	115984	423474	75	0.002	0.075	
FH0807A	423475	7.95	9.65	1.70	Assay	115985	423475	56	0.002	0.056	
FH0807A	423476	13.05	13.55	0.50	Assay	115986	423476	25	<0.001	0.025	
FH0807A	423477	16.70	17.20	0.50	Assay	115987	423477	16	<0.001	0.016	
FH0807A	423477	16.70	17.20	0.50	Assay	115988	423477	22	<0.001	0.022	
FH0807A	423478	31.75	32.25	0.50	Assay	115989	423478	18	<0.001	0.018	
FH0807A	423479	35.13	35.63	0.50	Assay	115990	423479	16	<0.001	0.016	
	423480	Standard Au Q3				Assay	115991	423480	32	<0.001	0.032
FH0807A	423481	40.63	41.13	0.50	Assay	115992	423481	20	<0.001	0.02	
FH0807A	423482	41.13	42.67	1.54	Assay	115993	423482	24	<0.001	0.024	
FH0807A	423483	42.67	43.17	0.50	Assay	115994	423483	20	<0.001	0.02	
FH0807A	423484	43.17	44.45	1.28	Assay	115995	423484	14	<0.001	0.014	
FH0807A	423485	44.45	44.95	0.50	Assay	115996	423485	<5	<0.001	<0.005	
FH0807A	423486	44.95	45.90	0.95	Assay	115997	423486	12	<0.001	0.012	
FH0807A	423487	45.90	46.45	0.55	Assay	115998	423487	8	<0.001	0.008	
FH0807A	423487	45.90	46.45	0.55	Assay	115999	423487	7	<0.001	0.007	
FH0807A	423488	46.45	46.97	0.52	Assay	116000	423488	50	0.001	0.05	
FH0807A	423489	46.97	47.47	0.50	Assay	116001	423489	9	<0.001	0.009	

Opikeigan Lake 2008 Assay Sheet								Au ppb	Au oz/t	Au g/t
Hole ID	Sample	From	To	Interval	Type	Acc #	Client ID	5 DL	0.001 DL	0.005 DL
FH0807A	423490	47.47	48.83	1.36	Assay	116002	423490	20	<0.001	0.02
FH0807A	423491	48.83	50.33	1.50	Assay	116003	423491	12	<0.001	0.012
FH0807A	423492	50.33	51.78	1.45	Assay	116004	423492	13	<0.001	0.013
FH0807A	423493	51.78	53.28	1.50	Assay	116005	423493	25	<0.001	0.025
FH0807A	423494	53.28	54.78	1.50	Assay	116006	423494	10	<0.001	0.01
FH0807A	423495	54.78	56.26	1.48	Assay	116007	423495	16	<0.001	0.016
FH0807A	423496	56.26	57.46	1.20	Assay	116008	423496	8	<0.001	0.008
FH0807A	423497	57.46	58.96	1.50	Assay	116009	423497	18	<0.001	0.018
FH0807A	423497	57.46	58.96	1.50	Assay	116010	423497	11	<0.001	0.011
FH0807A	423498	65.67	67.17	1.50	Assay	116011	423498	24	<0.001	0.024
FH0807A	423499	67.17	68.67	1.50	Assay	116012	423499	13	<0.001	0.013
	423500	Standard Au Q3			Assay	116013	423500	379	0.011	0.379
FH0807A	257601	68.67	70.15	1.48	Assay	116014	257601	9	<0.001	0.009
FH0807A	257602	70.15	70.65	0.50	Assay	116015	257602	10	<0.001	0.01
FH0807A	257603	74.95	75.70	0.75	Assay	116016	257603	7	<0.001	0.007
FH0807A	257604	75.70	76.20	0.50	Assay	116017	257604	7	<0.001	0.007
FH0807A	257605	76.20	76.95	0.75	Assay	116018	257605	8	<0.001	0.008
FH0807A	257606	79.65	80.15	0.50	Assay	116019	257606	6	<0.001	0.006
FH0807A	257607	82.22	83.02	0.80	Assay	116020	257607	11	<0.001	0.011
FH0807A	257607	82.22	83.02	0.80	Assay	116021	257607	16	<0.001	0.016
FH0807A	257608	83.02	83.62	0.60	Assay	116022	257608	7	<0.001	0.007
FH0807A	257609	83.62	84.12	0.50	Assay	116023	257609	10	<0.001	0.01
FH0807A	257610	84.12	84.95	0.83	Assay	116024	257610	6	<0.001	0.006
FH0807A	257611	84.95	85.75	0.80	Assay	116025	257611	5	<0.001	0.005
FH0807A	257612	93.62	94.42	0.80	Assay	116026	257612	15	<0.001	0.015
FH0807A	257613	94.42	94.97	0.55	Assay	116027	257613	16	<0.001	0.016
FH0807A	257614	94.97	95.47	0.50	Assay	116028	257614	33	<0.001	0.033
FH0807A	257615	95.47	96.27	0.80	Assay	116029	257615	5	<0.001	0.005
FH0808	257616	2.50	3.30	0.80	Assay	116030	257616	17	<0.001	0.017
FH0808	257617	3.30	4.30	1.00	Assay	116031	257617	13	<0.001	0.013
FH0808	257617	3.30	4.30	1.00	Assay	116032	257617	13	<0.001	0.013
FH0808	257618	4.30	5.50	1.20	Assay	116033	257618	12	<0.001	0.012
FH0808	257619	7.07	8.37	1.30	Assay	116034	257619	19	<0.001	0.019
	257620	Standard Au Q3			Assay	116035	257620	420	0.012	0.42
FH0808	257621	8.37	8.87	0.50	Assay	116036	257621	4012	0.117	4.012
FH0808	257622	8.87	9.97	1.10	Assay	116037	257622	214	0.006	0.214
FH0808	257623	9.97	11.27	1.30	Assay	116038	257623	166	0.005	0.166
FH0808	257624	14.37	15.32	0.95	Assay	116039	257624	176	0.005	0.176
FH0808	257625	15.32	15.82	0.50	Assay	116040	257625	53	0.002	0.053
FH0808	257626	15.82	16.37	0.55	Assay	116041	257626	24	<0.001	0.024
FH0808	257627	16.37	17.37	1.00	Assay	116042	257627	8	<0.001	0.008
FH0808	257627	16.37	17.37	1.00	Assay	116043	257627	23	<0.001	0.023
FH0808	257628	21.17	22.17	1.00	Assay	116044	257628	8	<0.001	0.008
FH0808	257629	22.17	23.17	1.00	Assay	116045	257629	9	<0.001	0.009
FH0808	257630	23.17	24.17	1.00	Assay	116046	257630	8	<0.001	0.008
FH0808	257631	26.60	27.87	1.27	Assay	116047	257631	10	<0.001	0.01
FH0808	257632	27.87	28.57	0.70	Assay	116048	257632	<5	<0.001	<0.005
FH0808	257633	28.57	29.37	0.80	Assay	116049	257633	5	<0.001	0.005
FH0808	257634	29.37	30.17	0.80	Assay	116050	257634	<5	<0.001	<0.005
FH0808	257635	30.17	30.98	0.81	Assay	116051	257635	<5	<0.001	<0.005
FH0808	257636	30.98	31.78	0.80	Assay	116052	257636	6	<0.001	0.006
FH0808	257637	31.78	32.98	1.20	Assay	116053	257637	<5	<0.001	<0.005

Opikeigan Lake 2008 Assay Sheet								Au ppb	Au oz/t	Au g/t
Hole ID	Sample	From	To	Interval	Type	Acc #	Client ID	5 DL	0.001 DL	0.005 DL
FH0808	257637	31.78	32.98	1.20	Assay	116054	257637	<5	<0.001	<0.005
FH0808	257638	39.30	40.05	0.75	Assay	116055	257638	6	<0.001	0.006
FH0808	257639	40.05	40.55	0.50	Assay	116056	257639	7	<0.001	0.007
FH0808	257640	Standard Au Q3			Assay	116057	257640	370	0.011	0.37
FH0808	257641	40.55	41.30	0.75	Assay	116058	257641	<5	<0.001	<0.005
FH0808	257642	46.32	47.82	1.50	Assay	116059	257642	7	<0.001	0.007